



Karl Setzer

Commodity Risk Analyst at AgriVisor

Acreage and Stocks Data

RISK DISCLAIMER: The risk of loss in trading commodity futures and options is substantial. Before trading, you should carefully consider your financial position to determine if futures trading is appropriate. When trading futures and/or options, it is possible to lose more than the full value of your account. All funds committed should be risk capital. Past performance is not necessarily indicative of future results. The information contained in this report is believed to be reliable but is not guaranteed to accuracy or completeness by AgriVisor, LLC. This report is provided for informational purposes only and is not furnished for the purpose of, nor intended to be relied upon for specific trading in commodities herein named. This is not independent research and is provided as a service. As such, this is considered a solicitation.



Prospective Plantings

ISSN: 1949-159X

Released March 31, 2023, by the National Agricultural Statistics Service (NASS), Agricultural Statistics Board, United States Department of Agriculture (USDA).

Corn Planted Acreage Up 4 Percent from 2022
Soybean Acreage Up Slightly
All Wheat Acreage Up 9 Percent
All Cotton Acreage Down 18 Percent

Corn planted area for all purposes in 2023 is estimated at 92.0 million acres, up 4 percent or 3.42 million acres from last year. Compared with last year, planted acreage is expected to be up or unchanged in 40 of the 48 estimating States.

Soybean planted area for 2023 is estimated at 87.5 million acres, up slightly from last year. Compared with last year, planted acreage is up or unchanged in 15 of the 29 estimating States.

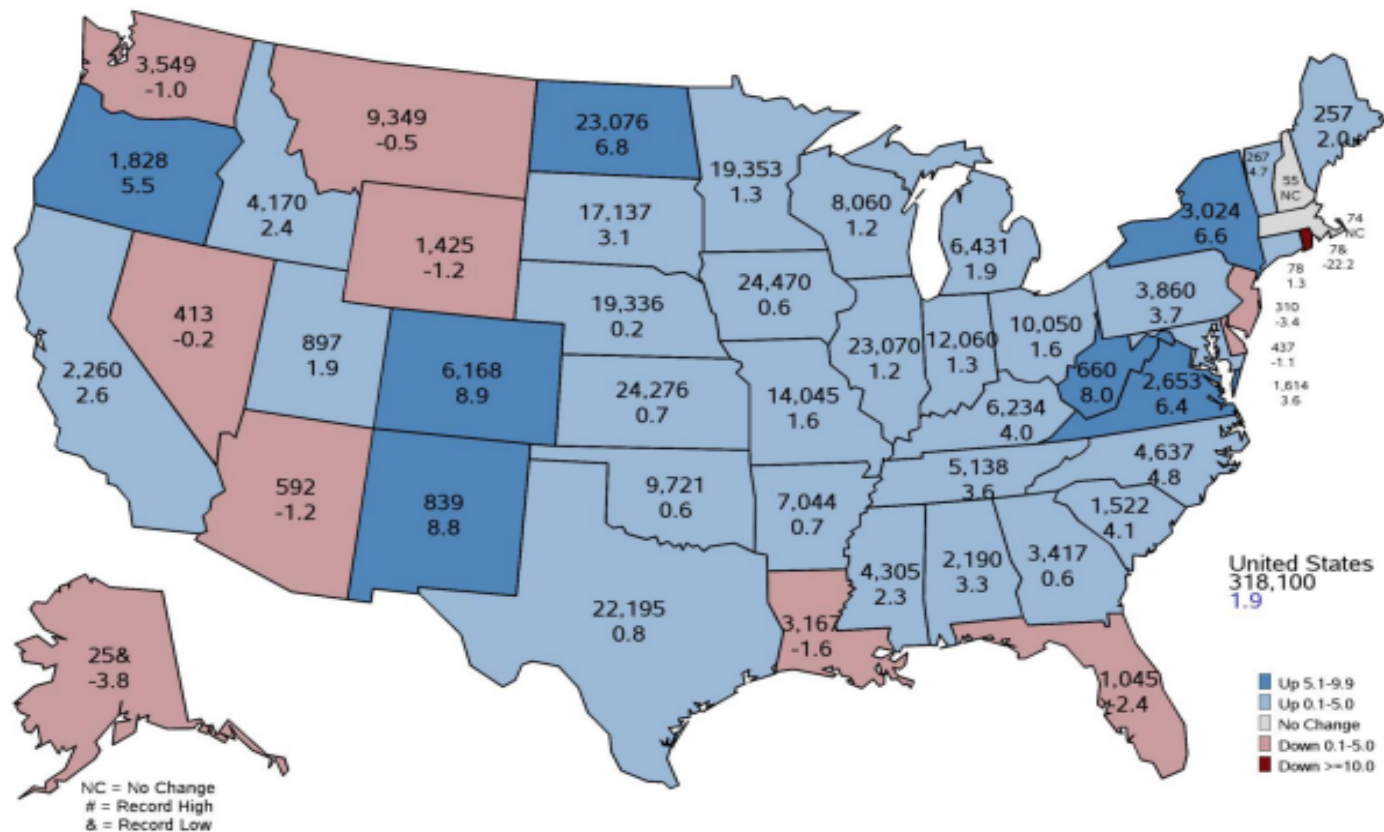
All wheat planted area for 2023 is estimated at 49.9 million acres, up 9 percent from 2022. The 2023 winter wheat planted area, at 37.5 million acres, is up 13 percent from last year and up 2 percent from the previous estimate. Of this total, about 26.0 million acres are Hard Red Winter, 7.80 million acres are Soft Red Winter, and 3.71 million acres are White Winter. Area expected to be planted to other spring wheat for 2023 is estimated at 10.6 million acres, down 2 percent from 2022. Of this total, about 9.95 million acres are Hard Red Spring wheat. Durum planted area for 2023 is expected to total 1.78 million acres, up 9 percent from the previous year.

All cotton planted area for 2023 is estimated at 11.3 million acres, down 18 percent from last year. Upland area is estimated at 11.1 million acres, down 18 percent from 2022. American Pima area is estimated at 154,000 acres, down 16 percent from 2022.



2023 Principal Crops Planted

Thousand Acres and Percent Change from Previous Year



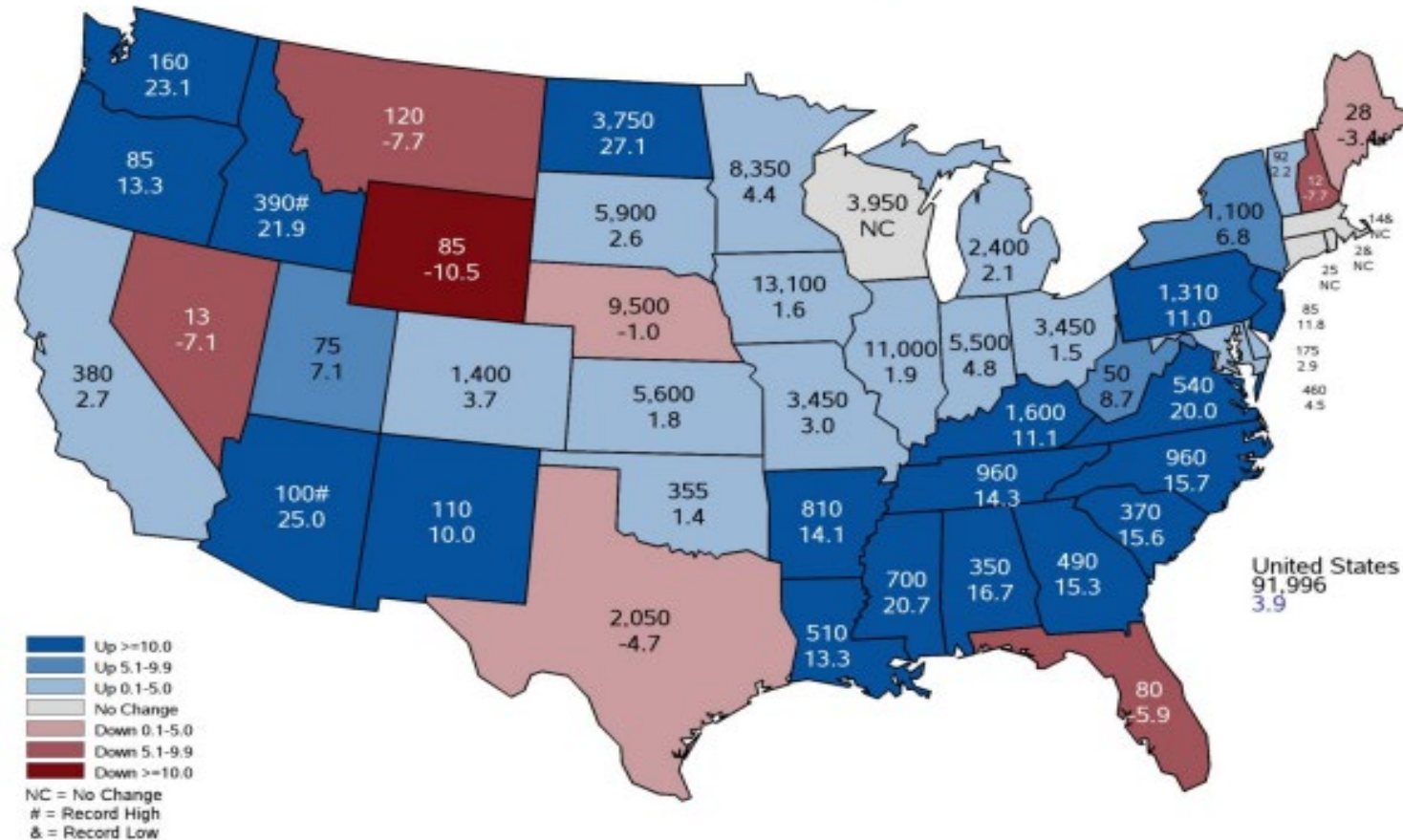
United States Department of Agriculture
National Agricultural Statistics Service

March 31, 2023



2023 Corn Planted Acreage

Thousand Acres and Percent Change from Previous Year





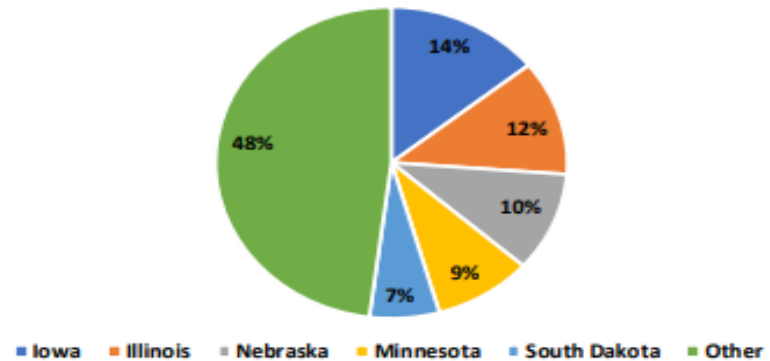
2023 Corn Planted Acreage



	Planted (1,000 Acres)
United States	91,996
% Change from Previous Estimate	N/A
% Change from Previous Season	↑ 3.9

	Top 5 States Planted	
	(1,000 Acres)	% Δ PY
Iowa	13,100	↑ 1.6
Illinois	11,000	↑ 1.9
Nebraska	9,500	↓ 1.0
Minnesota	8,350	↑ 4.4
South Dakota	5,900	↑ 2.6

2023 Corn Planted Acres
By State

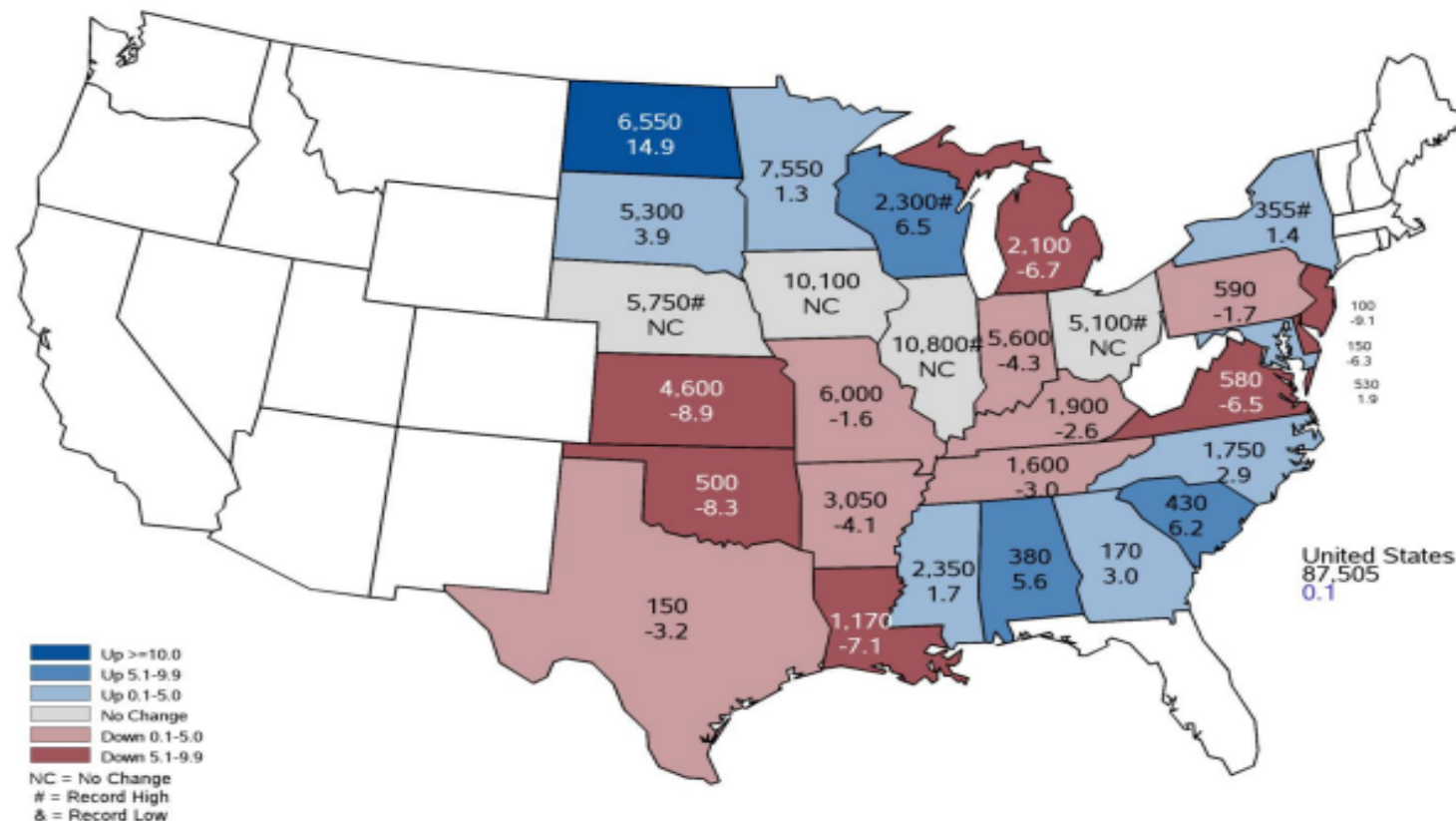




2023 Soybean Planted Acreage



Thousand Acres and Percent Change from Previous Year





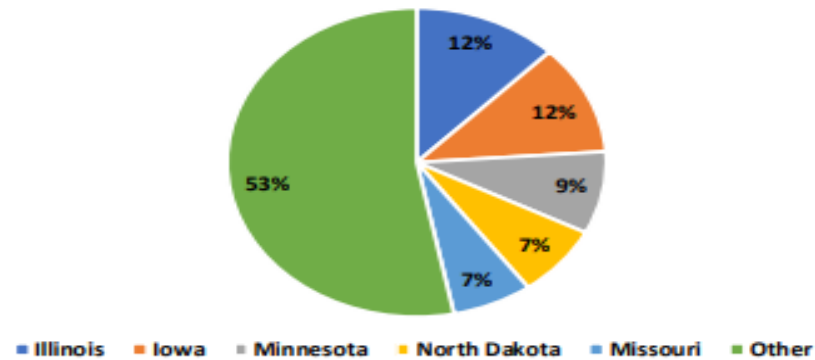
2023 Soybeans Planted Acreage



	Planted (1,000 Acres)
United States	87,505
% Change from Previous Estimate	N/A
% Change from Previous Season	↑ 0.1

	Top 5 States Planted	
	(1,000 Acres)	% Δ PY
Illinois	10,800	NC
Iowa	10,100	NC
Minnesota	7,550	↑ 1.3
North Dakota	6,550	↑ 14.9
Missouri	6,000	↓ 1.6

2023 Soybean Planted Acres
By State





Grain Stocks

ISSN: 1949-0925

Released March 31, 2023, by the National Agricultural Statistics Service (NASS), Agricultural Statistics Board, United States Department of Agriculture (USDA).

Corn Stocks Down 5 Percent from March 2022 Soybean Stocks Down 13 Percent All Wheat Stocks Down 8 Percent

Corn stocks in all positions on March 1, 2023 totaled 7.40 billion bushels, down 5 percent from March 1, 2022. Of the total stocks, 4.11 billion bushels were stored on farms, up 1 percent from a year earlier. Off-farm stocks, at 3.29 billion bushels, are down 10 percent from a year ago. The December 2022 - February 2023 indicated disappearance is 3.42 billion bushels, compared with 3.88 billion bushels during the same period last year.

Soybeans stored in all positions on March 1, 2023 totaled 1.69 billion bushels, down 13 percent from March 1, 2022. Soybean stocks stored on farms are estimated at 750 million bushels, down slightly from a year ago. Off-farm stocks, at 936 million bushels, are down 21 percent from last March. Indicated disappearance for the December 2022 - February 2023 quarter totaled 1.34 billion bushels, up 11 percent from the same period a year earlier.

All wheat stored in all positions on March 1, 2023 totaled 946 million bushels, down 8 percent from a year ago. On-farm stocks are estimated at 227 million bushels, up 30 percent from last March. Off-farm stocks, at 719 million bushels, are down 16 percent from a year ago. The December 2022 - February 2023 indicated disappearance is 366 million bushels, 5 percent above the same period a year earlier.

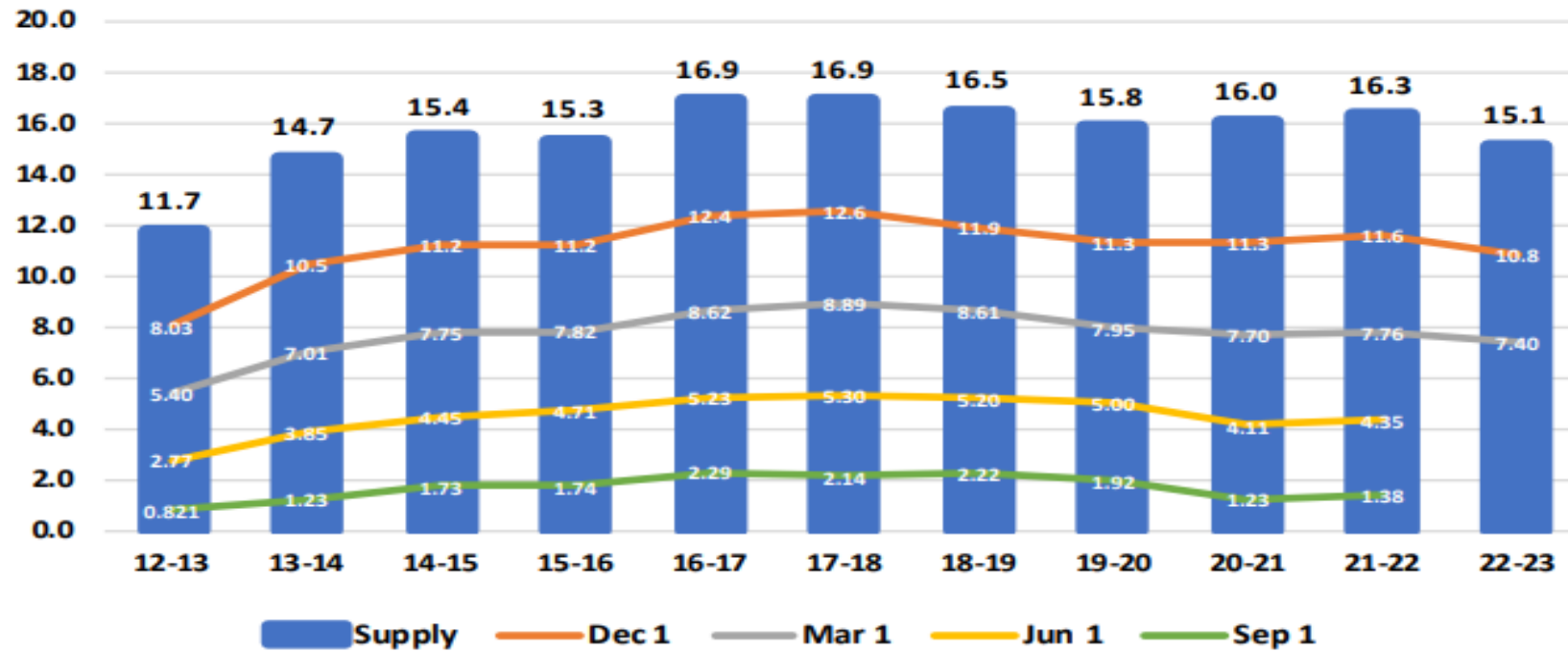
Durum wheat stocks in all positions on March 1, 2023 totaled 35.8 million bushels, up 18 percent from a year ago. On-farm stocks, at 17.1 million bushels, are up 36 percent from March 1, 2022. Off-farm stocks totaled 18.7 million bushels, up 6 percent from a year ago. The December 2022 - February 2023 indicated disappearance of 12.3 million bushels is 5 percent above the same period a year earlier.



March 2023 Corn Stocks United States

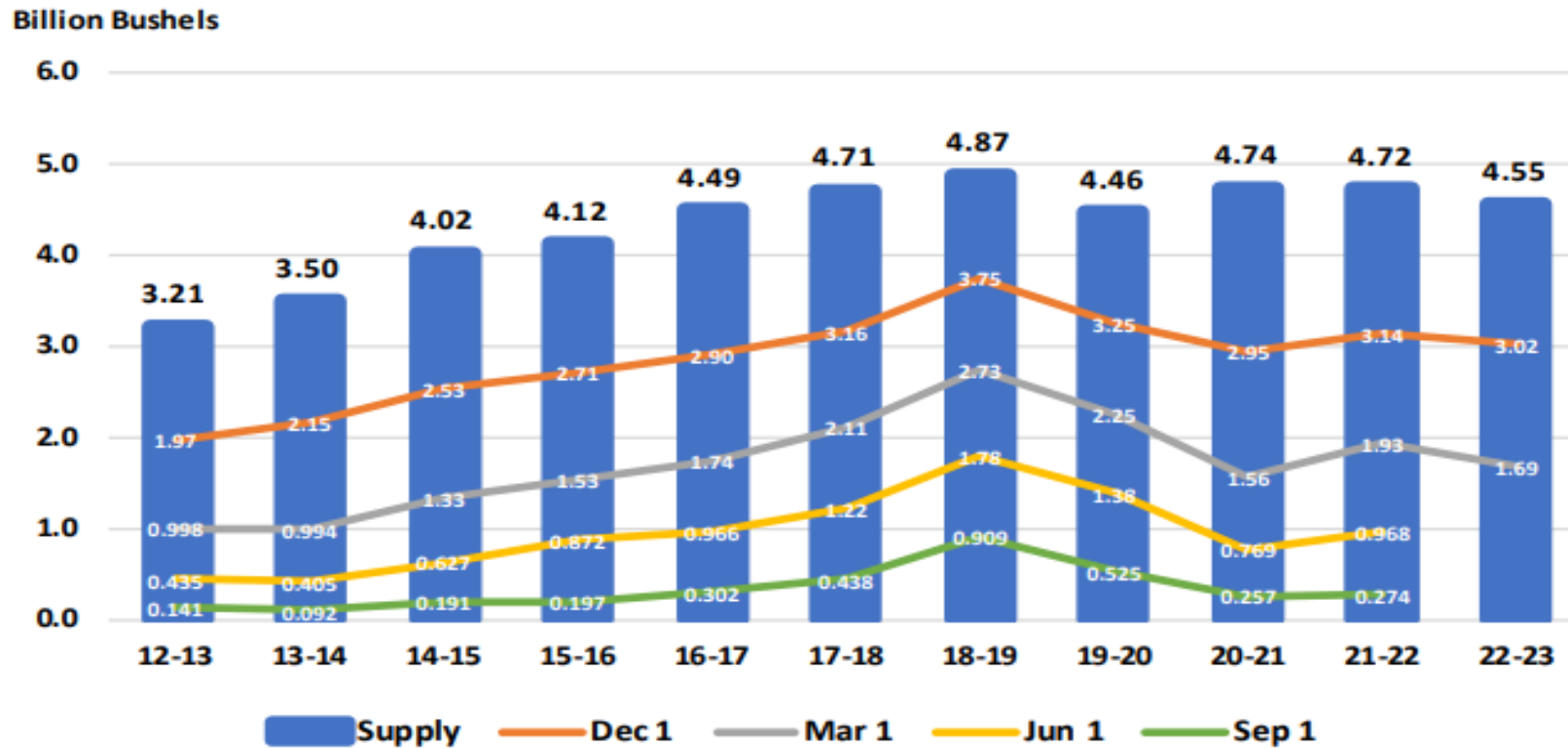


Billion Bushels





March 2023 Soybean Stocks United States

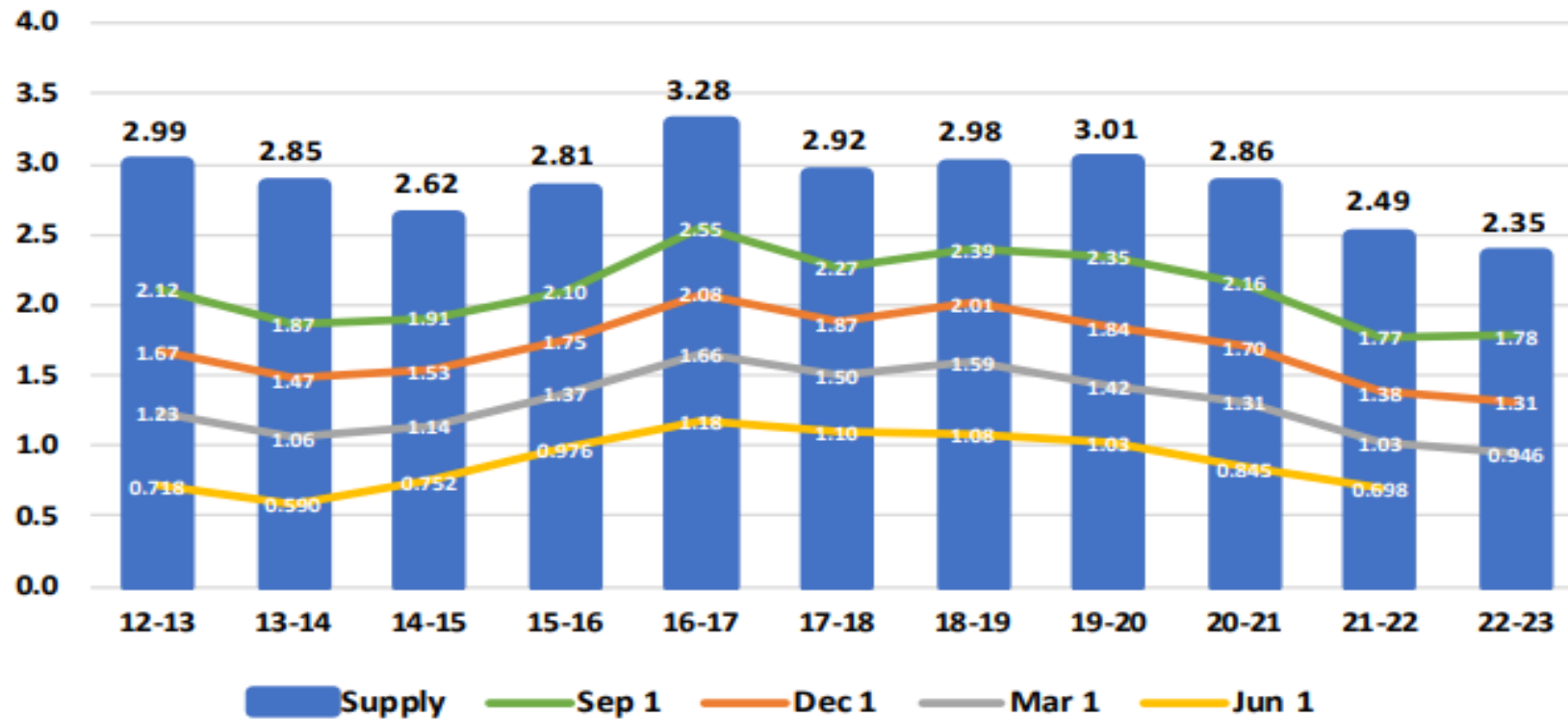




March 2023 All Wheat Stocks United States



Billion Bushels



Now what?

- **Actual Planting Data**
- **Weather**
- **Demand**
- **South American Crops**
- **Black Sea developments**
- **Outside Markets**
- **US Trade Relations**

Contact Info

Karl Setzer

ksetzer@agrivisor

309.660.5909