



United States Department of Agriculture
National Agricultural Statistics Service

August Crop Production
Executive Summary

Lance Honig, Chief
Crops Branch



Contents

Field Crops	Fruit and Nuts	Specialty Crops
Corn	Peaches	Dry Beans
Soybeans	Apples	Tobacco
Cotton	Pears	Sugarbeets
Wheat	Grapes	Sugarcane
Oats		Hops
Barley		Coffee
Sorghum		Summer Potatoes
Alfalfa & Other Hay		
Rice		
Peanuts		



Survey Overview

	Ag Yield	Objective Yield
Survey Type	Farmer Reported	Field Measurement
Crops Included	Field Crops	Corn, Soybeans, Cotton, and Winter Wheat
Sample Size	22,927	4,564
Collection Period	July 30– Aug 6	July 25– Aug 1



August 2015 Crop Production

Planted Acres

Crop	Unit	August 2015	% Change From Previous Estimate	% Change From Previous Season
Cotton				
Texas	Mil Ac	5.12	-1.9	-17.7
Sorghum				
Kansas	Mil Ac	3.20	-3.0	+12.3
Soybeans				
Arkansas	Mil Ac	3.20	-3.0	-1.2
Kansas	Mil Ac	3.65	-1.4	-8.8
Missouri	Mil Ac	5.10	-11.3	-9.7



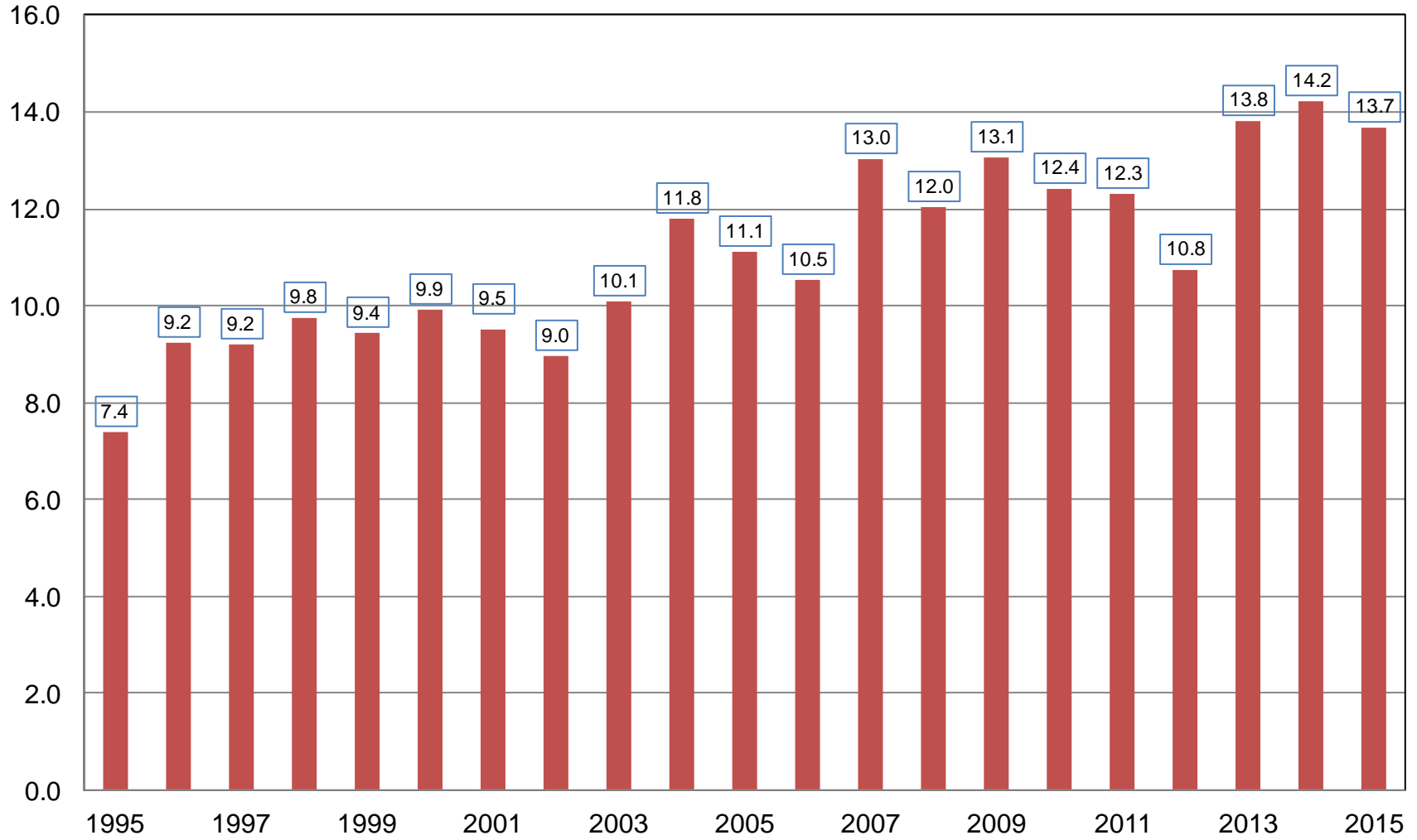
August 2015 Crop Production

Crop	Unit	August 2015	% Change From Previous Estimate	% Change From Previous Season
Corn				
Planted	Mil Ac	88.9	NC	-1.9
Harvested	Mil Ac	81.1	NC	-2.4
Yield	Bu/Ac	168.8	NA	-1.3
Production	Bil Bu	13.7	NA	-3.7



Corn for Grain Production United States

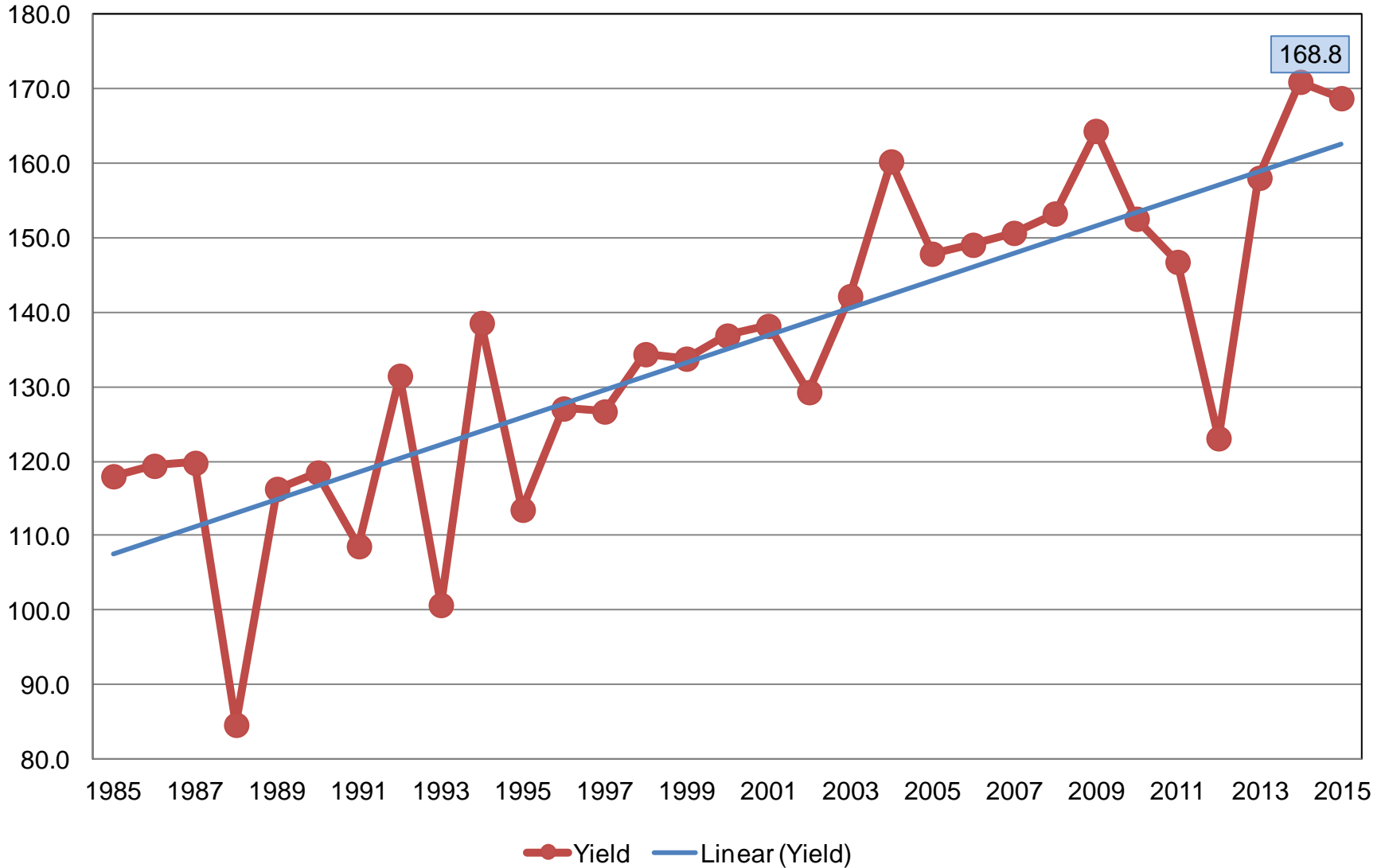
Billion Bushels



Corn for Grain Yield

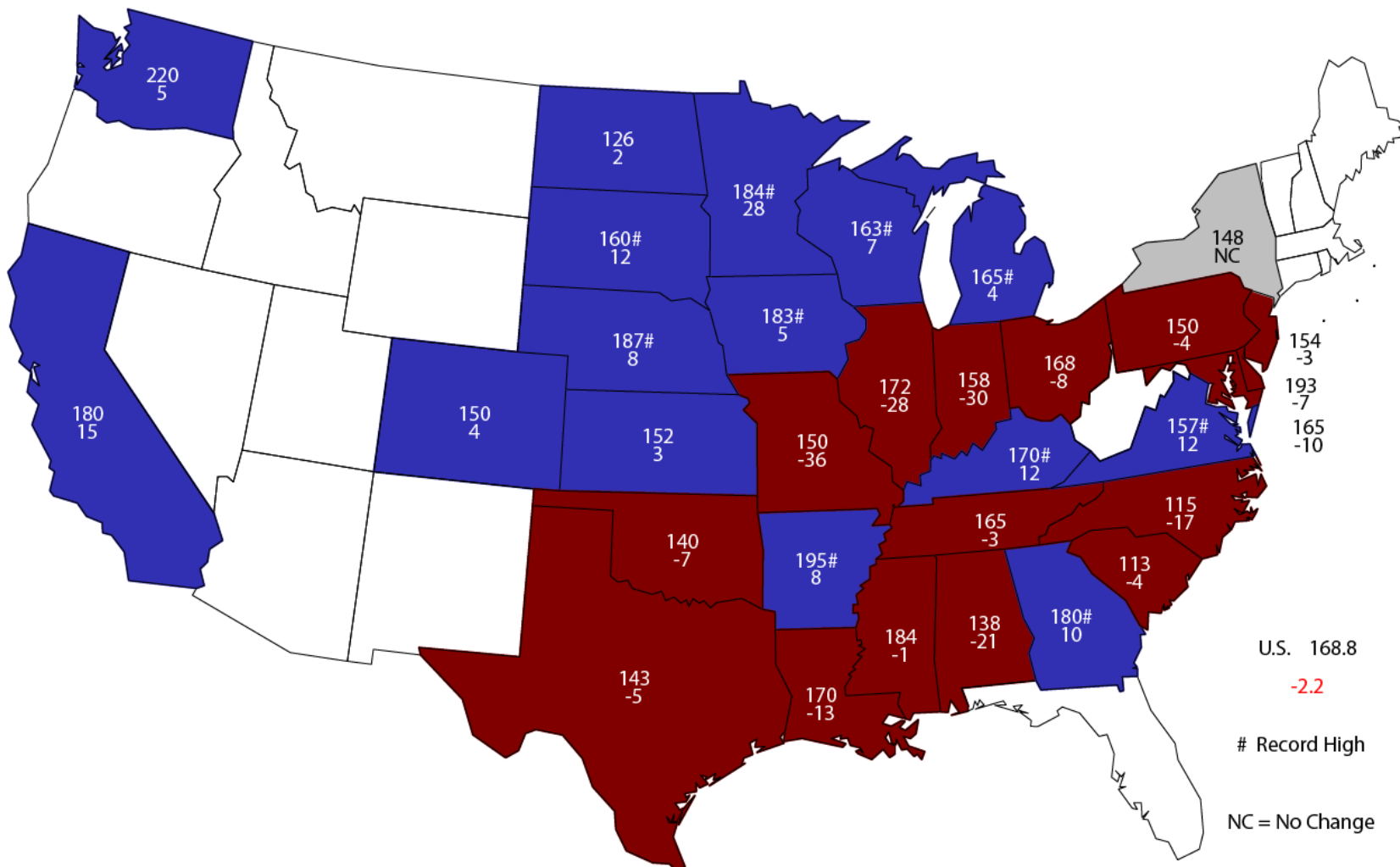
United States

Bushels per Acre



August 1, 2015 Corn Yield

Bushels and Change From Previous Year



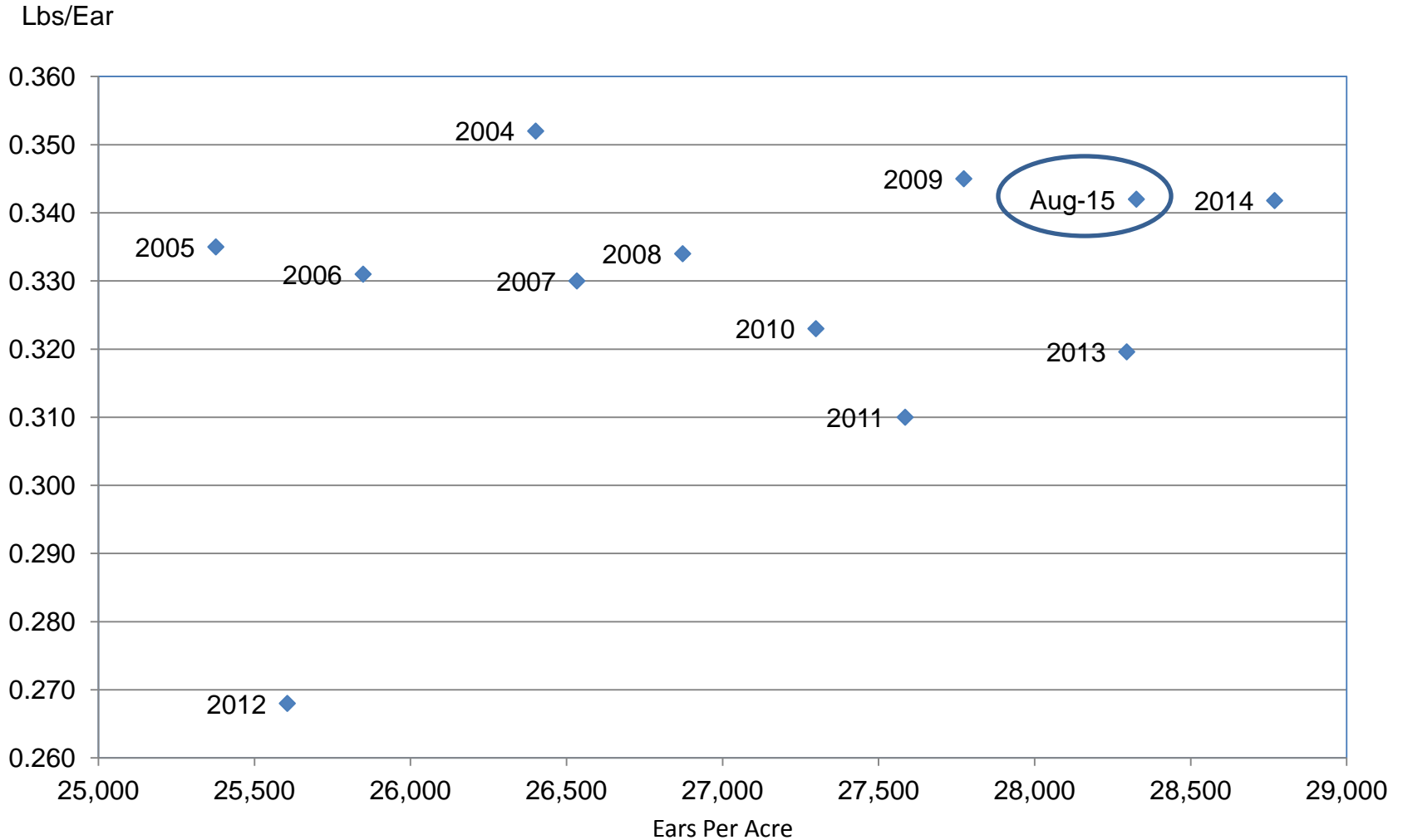
U.S. 168.8
-2.2

Record High
 NC = No Change



Corn Objective Yield Region

Ears Per Acre vs. Implied Ear Weight



Implied Ear Weight = (Published Yield * 56) / Ears



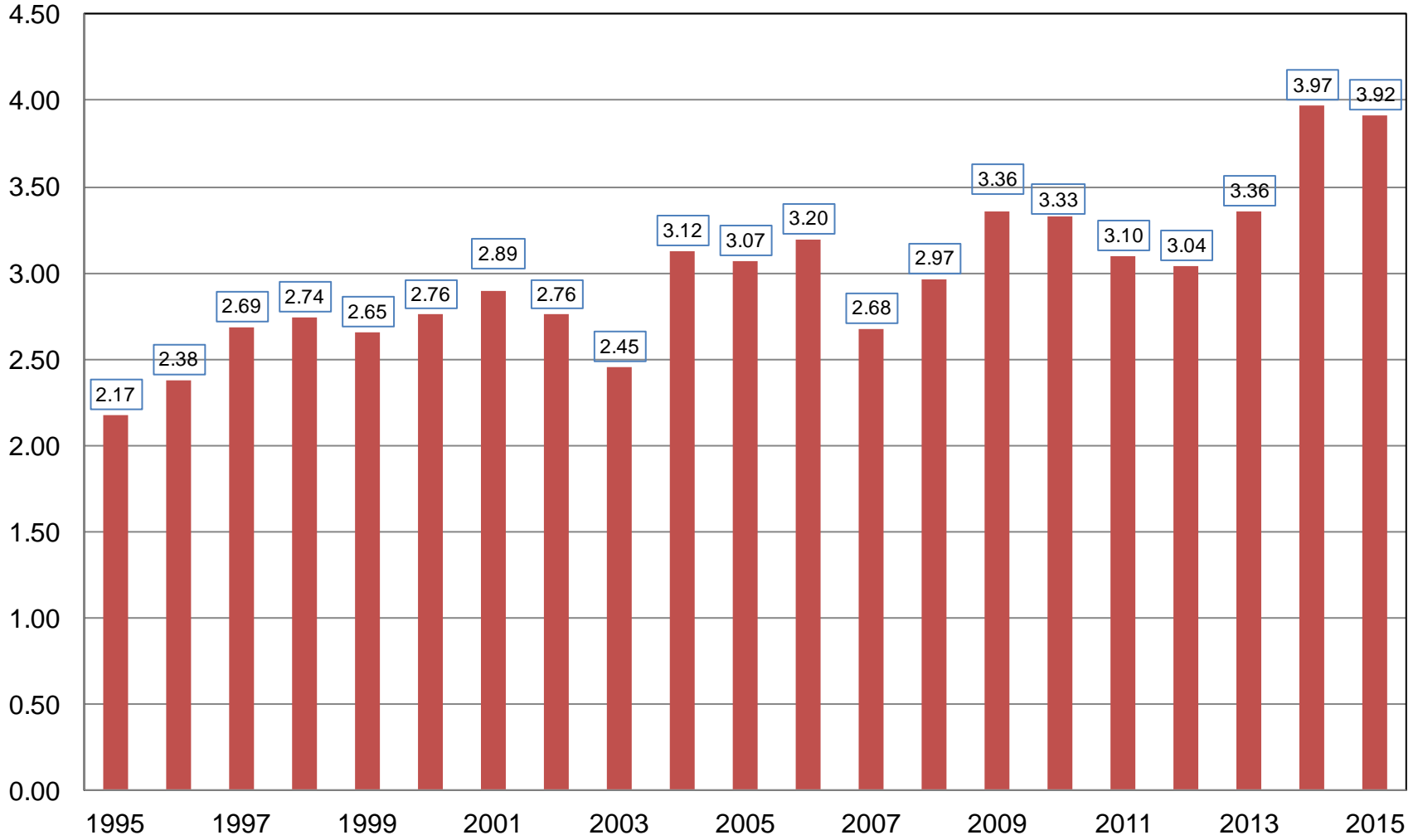
August 2015 Crop Production

Crop	Unit	August 2015	% Change From Previous Estimate	% Change From Previous Season
Soybeans				
Planted	Mil Ac	84.3	-0.9	+0.8
Harvested	Mil Ac	83.5	-1.1	+0.6
Yield	Bu/Ac	46.9	NA	-1.9
Production	Bil Bu	3.92	NA	-1.3



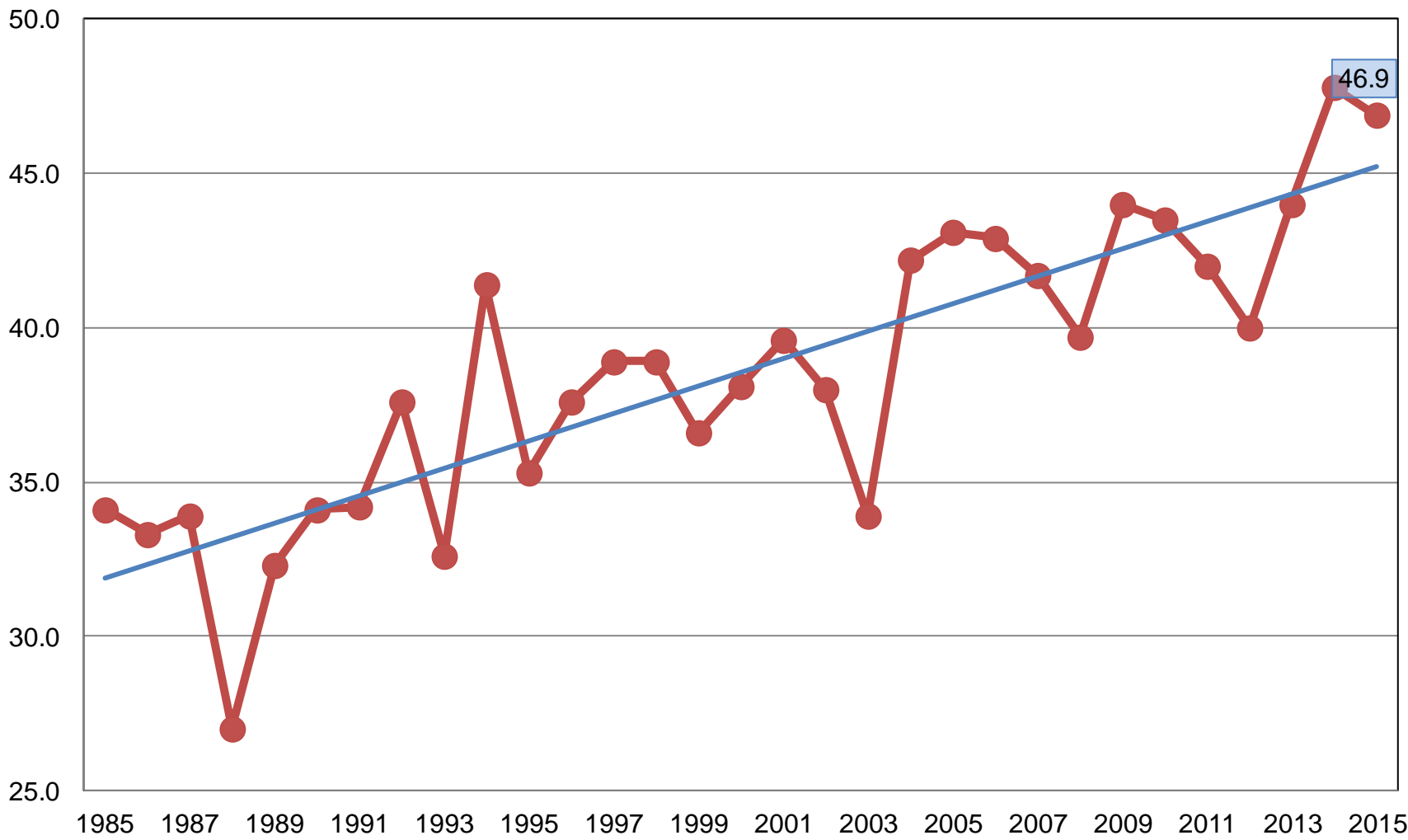
Soybean Production United States

Billion Bushels



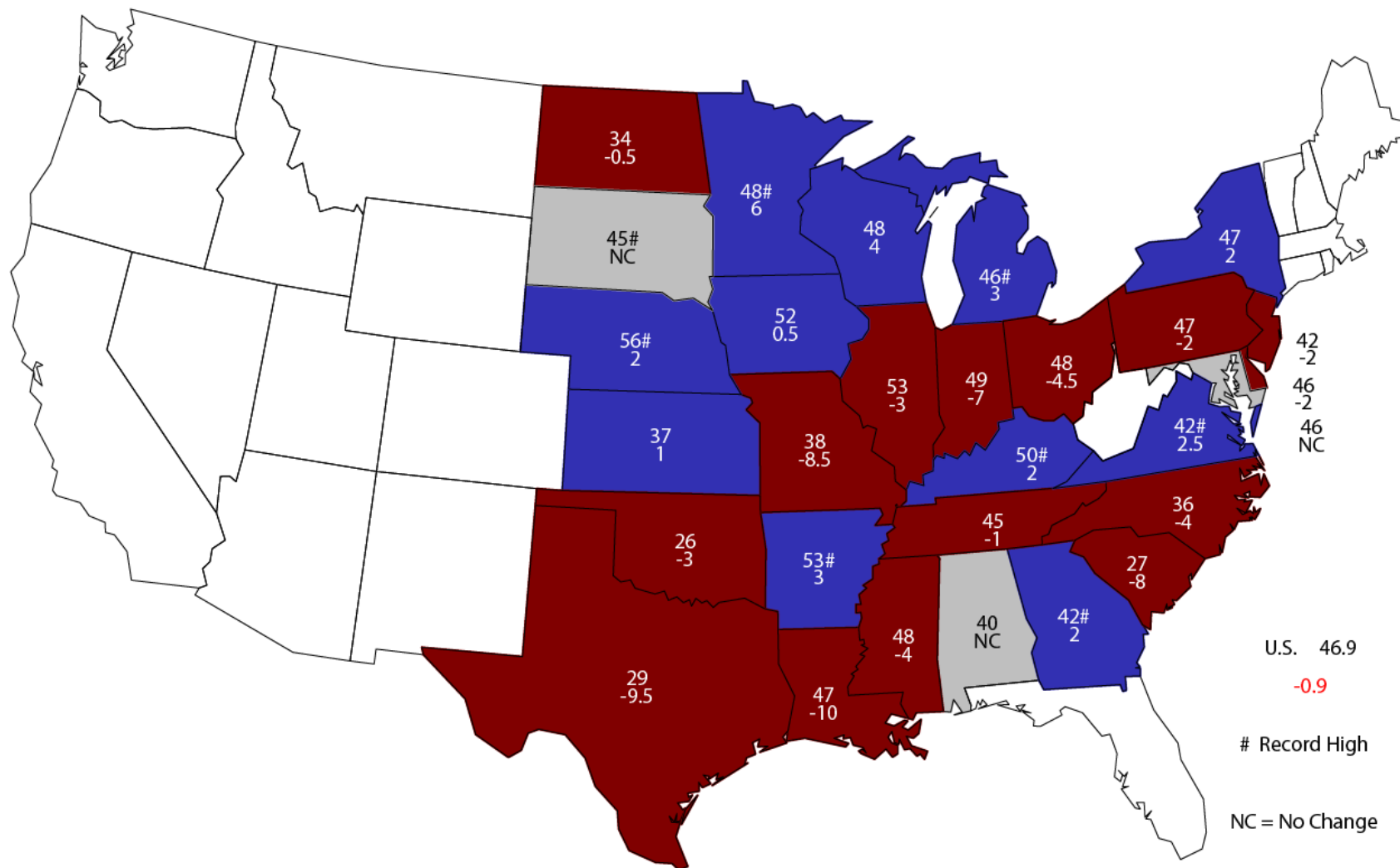
Soybean Yield United States

Bushels per Acre



—●— Yield — Linear (Yield)

August 1, 2015 Soybean Yield Bushels and Change From Previous Year



U.S. 46.9
 -0.9
 # Record High
 NC = No Change



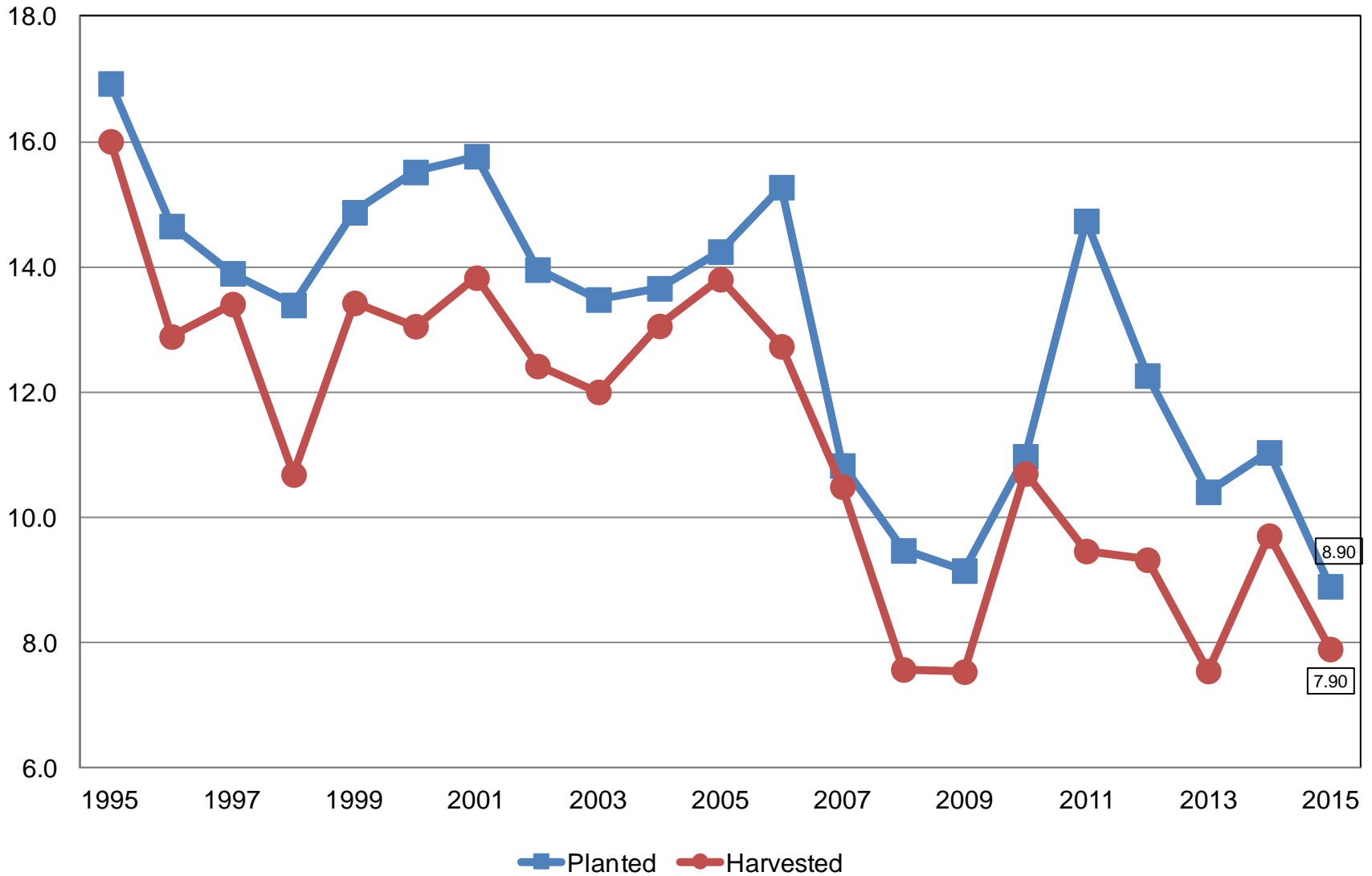
August 2015 Crop Production

Crop	Unit	August 2015	% Change From Previous Estimate	% Change From Previous Season
All Cotton				
Planted	Mil Ac	8.90	-1.1	-19.4
Harvested	Mil Ac	7.89	NA	-15.5
Yield	Lb/Ac	795	NA	-5.1
Production	Mil Bls	13.1	NA	-19.8



All Cotton Acres United States

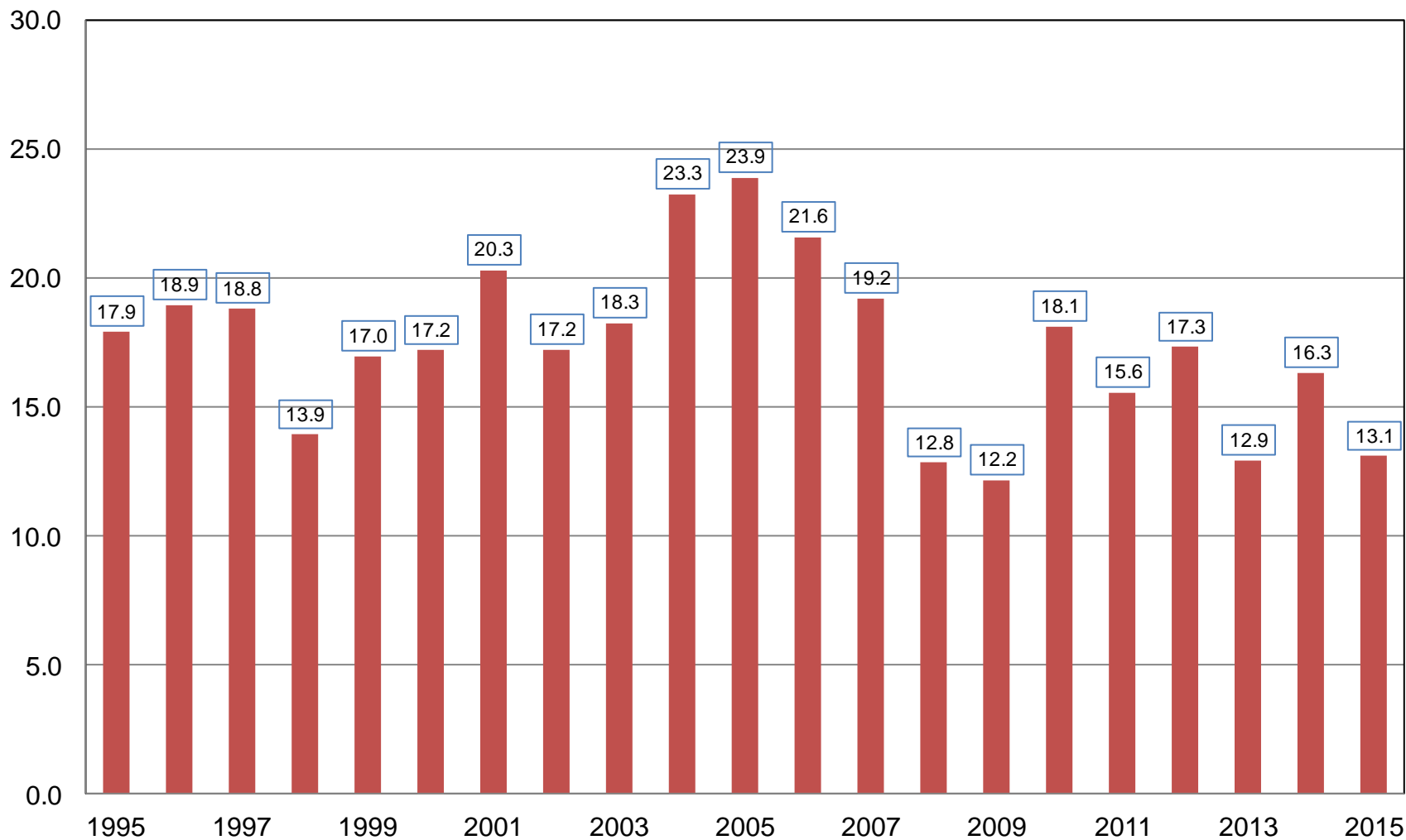
Million Acres





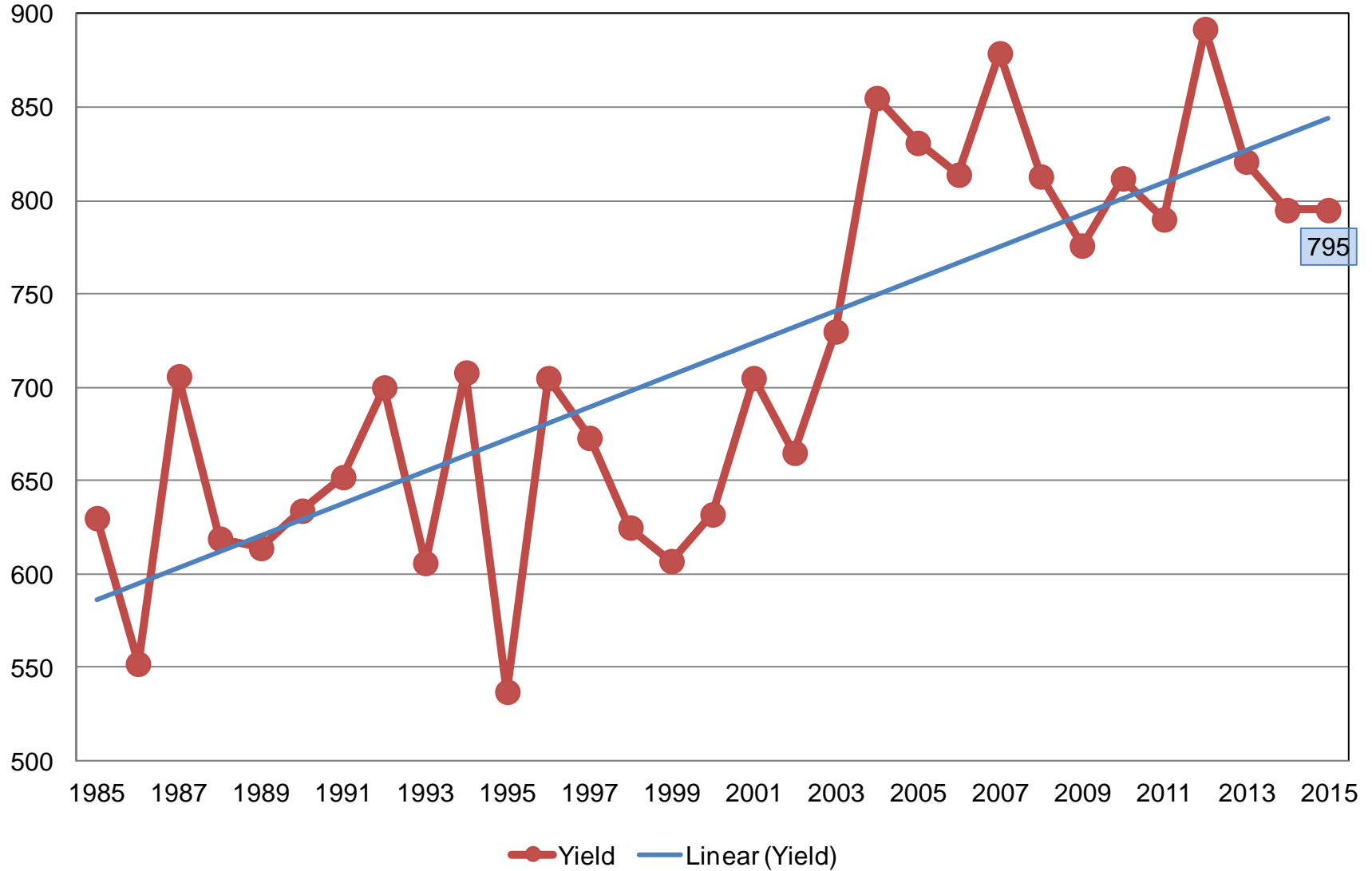
All Cotton Production United States

Million Bales



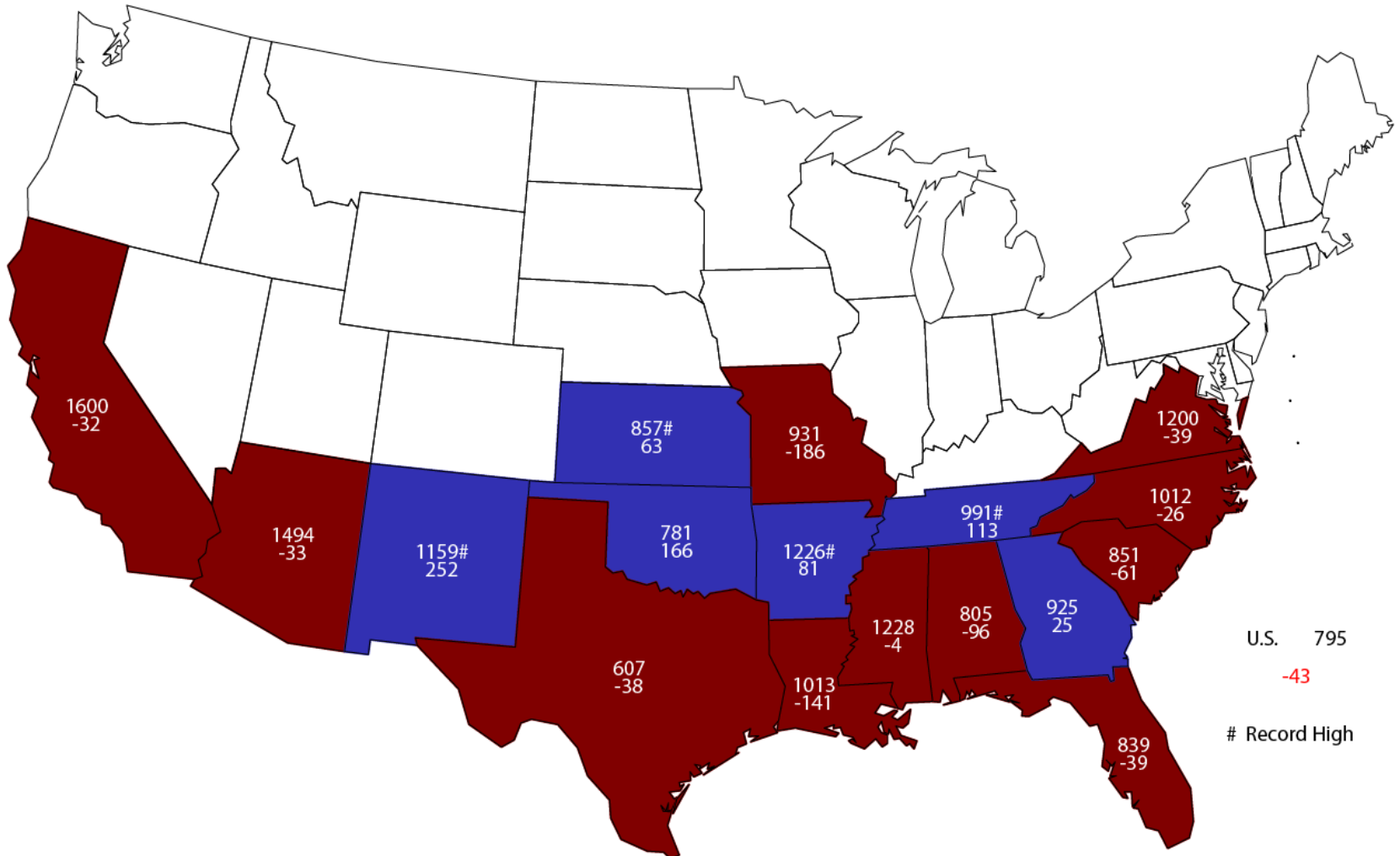
All Cotton Yield United States

Pounds per Acre



August 1, 2015 All Cotton Yield

Pounds and Change From Previous Year



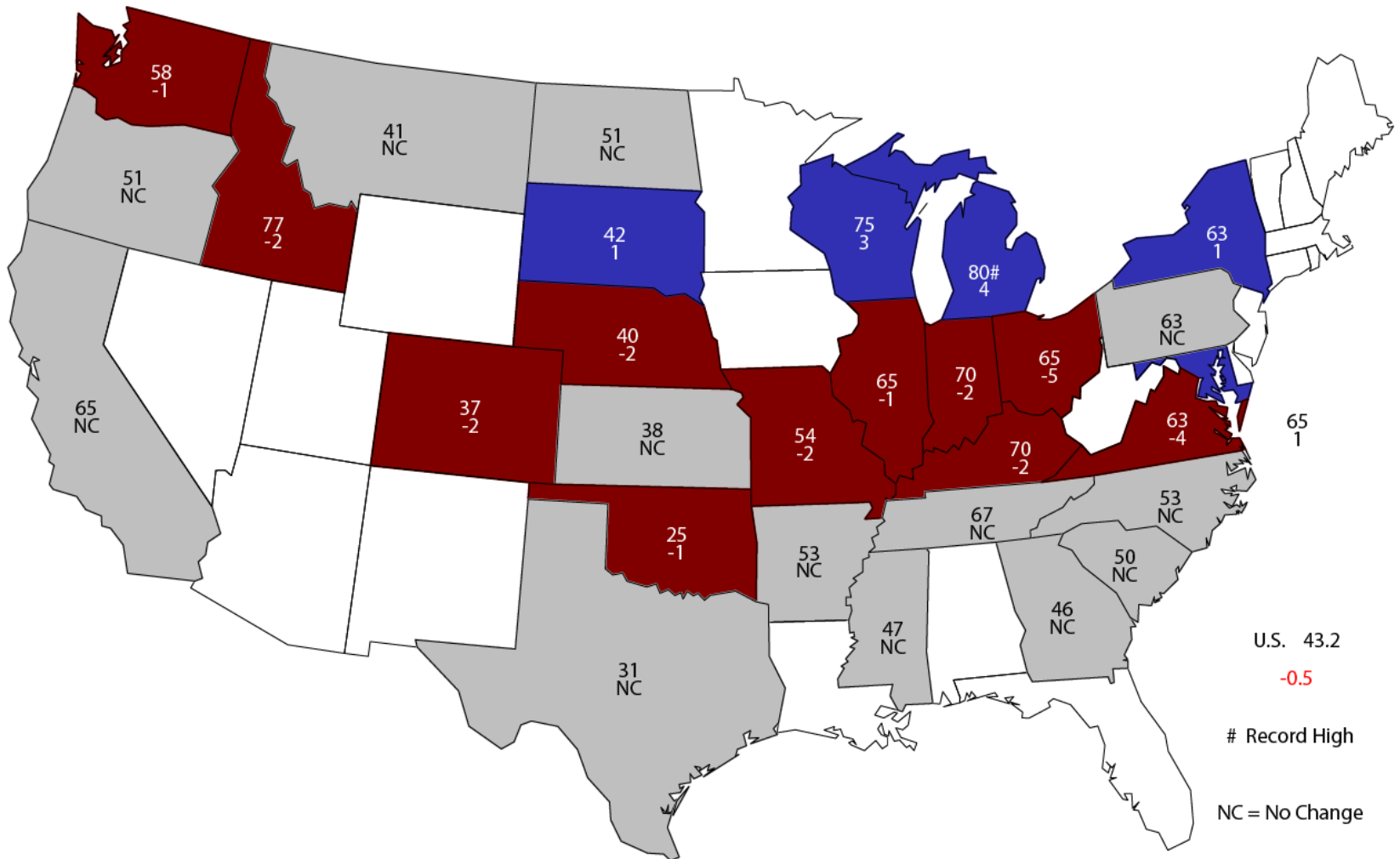


August 2015 Crop Production

Crop	Unit	August 2015	% Change From Previous Estimate	% Change From Previous Season
Winter Wheat				
Harvested	Mil Ac	33.3	NC	+3.2
Yield	Bu/Ac	43.2	-1.1	+1.4
Production	Bil Bu	1.44	-1.2	+4.4
Spring Wheat				
Harvested	Mil Ac	13.2	NC	+3.7
Yield	Bu/Ac	47.0	+0.6	+0.6
Production	Mil Bu	621	+0.7	+4.4
Durum Wheat				
Harvested	Mil Ac	1.91	NC	+42.7
Yield	Bu/Ac	40.2	+1.5	+1.3
Production	Mil Bu	76.8	+1.6	+44.6
All Wheat				
Production	Bil Bu	2.14	-0.6	+5.4

August 1, 2015 Winter Wheat Yield

Bushels and Change From Previous Month



U.S. 43.2

-0.5

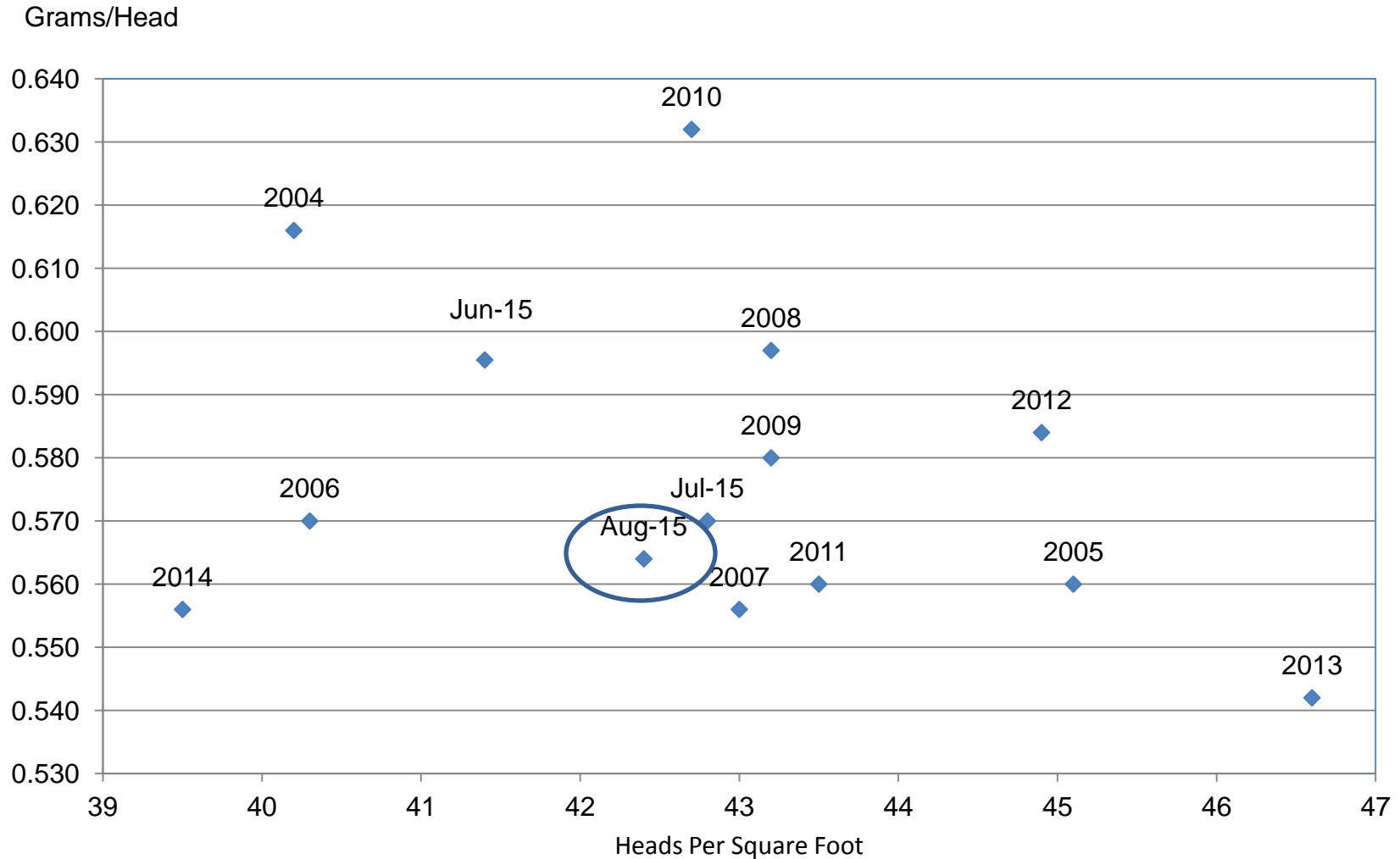
Record High

NC = No Change



Wheat Objective Yield Region

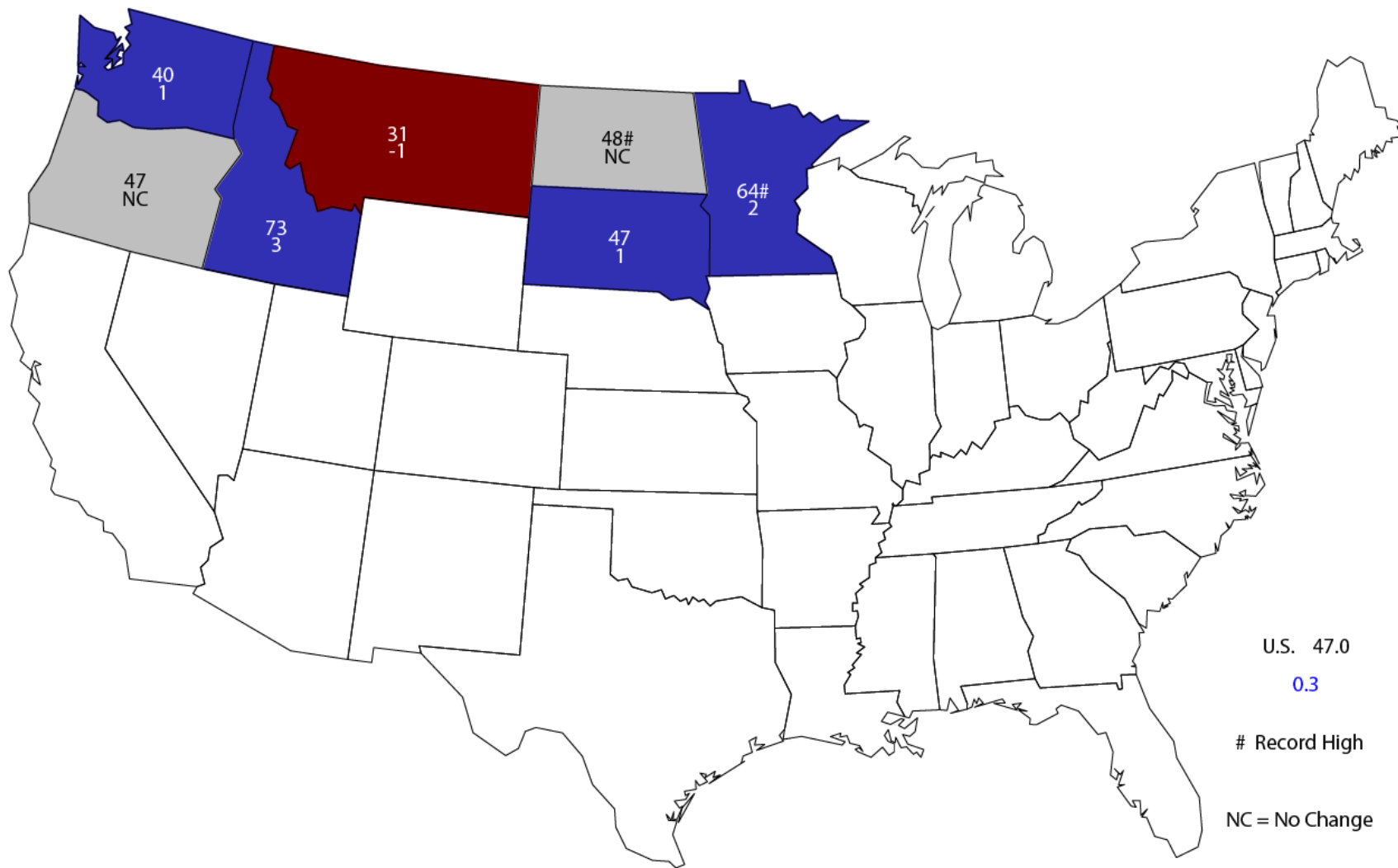
Heads Per Square Foot vs. Implied Head Weight



Implied Head Weight = Published Yield / (Heads*1.6006)

August 1, 2015 Other Spring Wheat Yield

Bushels and Change From Previous Month



U.S. 47.0
0.3

Record High

NC = No Change



August 2015 Crop Production

Crop	Unit	August 2015	% Change From Previous Forecast	% Change From Previous Season
Oats	Mil Bu	85.5	+2.2	+22.6
Barley	Mil Bu	210	+0.8	+18.6
Sorghum	Mil Bu	573	NA	+32.4
Alfalfa Hay	Mil Tons	62.1	NA	+1.1
Other Hay	Mil Tons	80.0	NA	+2.1
Rice	Mil Cwt	205	NA	-7.2
Peanuts	Bil Lbs	6.18	NA	+18.6



August 2015 Crop Production

Crop	Unit	August 2015	% Change From Previous Estimate	% Change From Previous Season
All Tobacco	Mil Lbs	717	NA	-18.2
Dry Beans	Mil Cwt	29.3	NA	+0.3
Sugarbeets	Mil Tons	34.2	NA	+9.1
Sugarcane	Mil Tons	32.1	NA	+5.7
Summer Potatoes	Mil Cwt	16.9	NA	+7.3



August 2015 Crop Production

Crop	Unit	August 2015	% Change From Previous Forecast	% Change From Previous Season
Peaches	Thou Tons	805	NA	-5.7
Apples	Bil Lbs	10.2	NA	-11.0
Pears	Thou Tons	733	NA	-11.9
Grapes	Mil Tons	8.05	NA	+3.5
Hops	Mil Lbs	80.0	NA	+12.7
Coffee (HI)	Mil Lbs	7.50	-7.4	-10.7



Upcoming Reports

Release Date	Report Title
August 19	Farm Computer Usage and Ownership
August 21	Cattle on Feed
August 27	Rice Stocks
August 31	Agricultural Prices Census: Organics Census: Tenure, Ownership and Transition of Agricultural Land
September 1	CAIR: Cotton CAIR: Grain Crushings
September 11	Crop Production



United States Department of Agriculture
National Agricultural Statistics Service

All Reports Available At
www.nass.usda.gov

For Questions
202-720-2127
800-727-9540
nass@nass.usda.gov