



Iowa Farm Bureau's Margin Management Webinar Series presents:

2018 Transportation Rules for Farmers

Wednesday, August 1, 2018
1:00 pm

Sponsored by:



Speaker:

Officer Robert B. Wittkowski T418
Iowa Department of Transportation
Motor Vehicle Enforcement

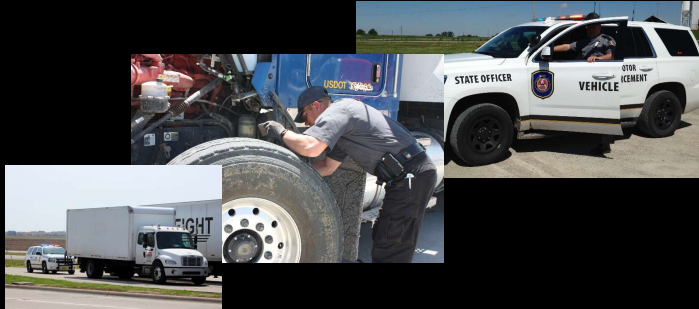
**Office of Motor
Vehicle
Enforcement**



MOTOR VEHICLE ENFORCEMENT

Our Core Mission:

Promote highway safety through education and enforcement of all Iowa law and Federal regulations.



MOTOR VEHICLE ENFORCEMENT

Who we are...MVE has 107 sworn peace officers, 80 of which work the road or weigh station according to schedule. We have officers working varying shifts and seven days a week. Officers are certified and trained to cover a wide variety of incidents in and out of the commercial motor vehicle (CMV) world.

What we do...

- Specialize in the enforcement of all federal regulations as they pertain to CMVs and their drivers.
- Enforce all Iowa laws including traffic and criminal code.
- Provide support to other law enforcement agencies as needed in times of natural disasters, dignitary support, and general community policing.

MOTOR VEHICLE ENFORCEMENT

Who has to comply with the Federal Motor Carrier Safety regulations?

Two requirements:

1.) All employers, employees, and commercial motor vehicles that transport property or passengers while conducting business in interstate commerce.

MOTOR VEHICLE ENFORCEMENT

Who has to comply with the Federal Motor Carrier Safety regulations?

2.) Vehicle size & commerce type

- Interstate commerce-Combination or single vehicle 10,001 lbs. or more
- Intrastate commerce-Single vehicle 10,001 lbs. or more
 - Combination 26,001 lbs. or more

MOTOR VEHICLE ENFORCEMENT

Who needs a US DOT Number?

- Operating across state lines while in commerce
(For hire or private)
- Inside the state-only for hire

A CMV IS:

- A single motor vehicle with a weight or weight rating of 10,001 lbs or more. (Interstate/Intrastate)
- A combination vehicle with a weight or weight rating of 10,001 lbs or more in interstate commerce.
- A combination vehicle with a combined weight rating of 26,001 lbs or more when the power unit is under 10,000 lbs in intrastate commerce.
- A vehicle of any size is used to transport hazardous Materials in a quantity requiring a placard.

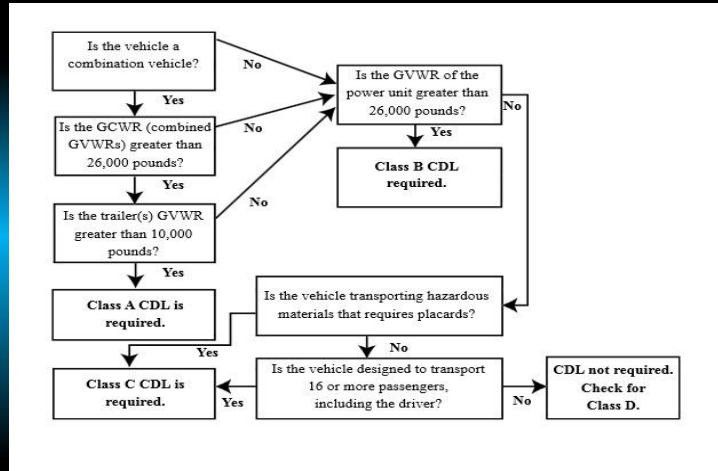


COMMERCIAL DRIVERS LICENSE

Based off of GVWR or Physical weight

- Class D Chauffeur's license - GVWR 16,001 – 26,000 lbs.
- Class A CDL - combination of two vehicles 26,001 lbs. or more with trailer 10,001 lbs. or more
- Class B CDL – GVWR or physical weight 26,001 or more
- Class C CDL – hauling 16 or more passengers or any size hazardous materials requiring placards

CDL FLOW CHART



OPERATOR LICENSE

Class C Operator License



GVWR less than 16,001 lbs

OPERATOR LICENSE

Class D Operator License



GVWR 16,001 lbs or more

CLASS D CHAUFFEUR'S LICENSE



GVWR 16,001 lbs to 26,000 lbs

COMMERCIAL DRIVERS LICENSE

Class D Chauffeur's

GVWR 26,000 lbs



GVWR 10,000 lbs

COMMERCIAL DRIVERS LICENSE

Class A CDL

GVWR 26,000 lbs



GVWR 10,001 lbs

COMMERCIAL DRIVERS LICENSE

Class A CDL

GVWR 68,000 lbs



GVWR 48,000 lbs

COMMERCIAL DRIVERS LICENSE

Class B CDL



GVWR 50,000 lbs

COMMERCIAL DRIVERS LICENSE

Class C CDL



GVWR 9,200 lbs

COMMERCIAL DRIVERS LICENSE

Endorsements

H – Hazardous Materials

- Transport hazardous materials requiring placards

N – Tank

- Tank with a capacity of 1000 gallons or more or multiple tanks of more than 119 gallon capacity and an aggregate rate capacity of 1000 gallons or more

X – HM/Tank Combination

- Qualified for both hazardous materials and tank vehicles

P- Passengers

- Designed to transport 16 or more passengers including the driver

T – Double/ Triple trailers

- Pulling a double or triple trailer

COMMERCIAL DRIVERS LICENSE

Restrictions

- L – Vehicle without air brakes
- K – CDL Intrastate only
- O – Except truck tractors
- B – Corrective Lenses
- E – Automatic transmission

Major Moving Offenses

- Operating While Impaired
 - Blood Alcohol .04% or more
 - Test refusal
 - Leaving the scene of a crash
 - Felony involving a CMV
 - Operating while Disqualified
 - Fatality / Vehicular Homicide
 - Controlled substance distribution
- * Single violation will result in a disqualification of your CDL

Serious Traffic Violations

- Speed 15 or more over limit
 - Reckless driving
 - Improper lane change
 - Following too close
 - Citation involving a fatal crash
 - Driving CMV with no CDL
 - CDL not in possession / CMV
 - Improper class CDL or endorsement
 - Handheld cell phone use / Texting
- * Two violations within a three year period will result in a disqualification of your CDL

CARGO SECUREMENT

CARGO SECUREMENT MEANS:



Prevent the Cargo From:

- Leaking
- Spilling
- Blowing
- Falling



General Load Securement Requirements

- Front end Structures adequate strength
- Blocking & Bracing
- Shoring bars
- Tiedowns

PREVENT SHIFTING OF LOAD

Upon or Within:

To such an extent that the vehicle's maneuverability or stability is adversely affected



CARGO SECUREMENT

Hazardous Materials Must Always Be Safely Secured



Tiedown Requirements

The minimum # of tiedowns required to secure cargo by

- weight is determined by the weight of the cargo and
- the Working Load Limit of the tiedowns used on that cargo

USE WORKING LOAD LIMIT



Assembly Rating

3/8 G6 Binder 5,400 WLL

Lowest
WLL

3/8 G7 Chain 6,600 WLL

3/8 G8 Hook 7,100 WLL

Unmarked Stake Pocket

Assembly is rated at 5,400 WLL

The Working Load Limit of a tie down assembly is:

$\frac{1}{2}$ the WLL of the assembly if the tiedown goes from an anchor point on the cargo to an anchor point on the vehicle

Direct to Cargo



Both Anchors Same Side

A tiedown with both ends anchored to the same side of the vehicle is allowed only $\frac{1}{2}$ WLL



The Working Load Limit of a tiedown assembly is:

The full WLL of the assembly if the tiedown goes from an anchor point on the vehicle over, through, or around the cargo to a second anchor point on the opposite side of the vehicle

Over / Around the Cargo



Tie-down Strength

The aggregate Working Load Limit of tiedowns must be at least $\frac{1}{2}$ the weight of the cargo being secured

Minimum by Length

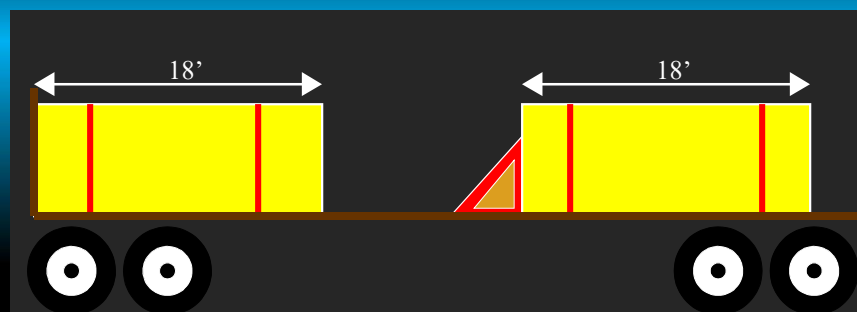
In addition to securing cargo by weight, there may be minimum # of tiedowns according to cargo length.

Minimum by Length, if Blocked

One Tiedown
for every
10' of cargo or fraction thereof

Blocked

One Tiedown for every 10' of cargo or fraction thereof

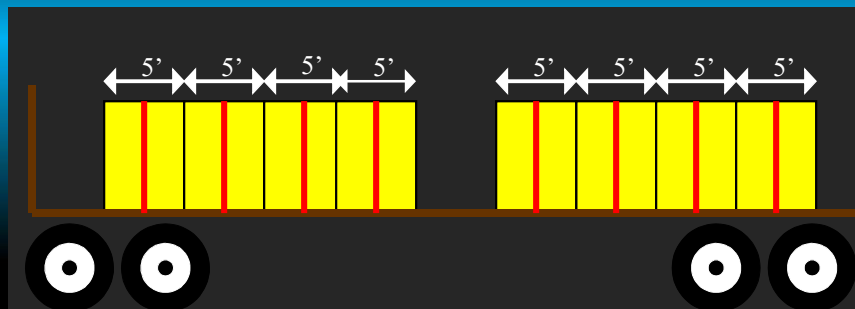


Minimum by Length, Not Blocked

Less than 5 feet in length
Less than 1,100# in weight
Minimum One Tiedown

Not Blocked

5' or less in Length and 1,100# or less



Tie-down Device Damage

- No damage or weakening that adversely effects performance or working load limit
- No cracks or cuts that adversely effect strength
- Only approved repairs



Anchor Point Damage

- No damage or weakening that adversely effects performance or working load limit
- No cracks or damage that adversely effect strength



Each Tie-down Must Be Adjustable



Heavy Equipment-Applicability

- Equipment weighing over 10,000 lbs
- Minimum of 4 chains required, additional chains may be needed for lowered accessories
- Remember WLL too!
- Articulated vehicles must be pinned or chained



Heavy equipment securement

Locate the tiedowns near the ends of the machine or
Factory anchor points



Light Equipment-Applicability

Under 10,000 lbs. vehicles

Must have at least one tie down
on front and one on rear

Prevent movement

- Forward
- Rearward
- Lateral
- Vertical





Iowa Farm Bureau's Margin Management Webinar Series presents:

2018 Transportation Rules for Farmers

Time for a short recording break.

Speaker:

Officer Robert B. Wittkowski T418

Iowa Department of Transportation

Motor Vehicle Enforcement

Agricultural Operations

The slide features a dark blue gradient background with a horizontal band of lighter blue in the center. The text 'Agricultural Operations' is centered in white. A thin, horizontal, glowing orange line is visible near the bottom of the slide.

Restricted CDL

- Restricted CDL issued to suppliers or employees of suppliers of agricultural inputs.
- Agricultural inputs means applicators of AG chemicals, fertilizer, seed, or animal feeds.
- Applicant may operate Class B or Class C vehicles but not a Class A combination vehicle.

Restricted CDL

- Applicant must have two years of driving experience with a license permitting at least two years of unaccompanied driving.
- Applicant must have a good driving record for the most recent two-year period.
- Restricted CDL is valid for a CMV requiring tank, air brake, and HM endorsements/restrictions.

Restricted CDL

- Restricted CDL holders may operate between the place of business and the farm currently being serviced, but not to exceed 150 miles from the place of business.

Restricted CDL

- The only hazardous materials allowed to be carried with a restricted CDL are:
- Liquid fertilizer, such as anhydrous ammonia in quantities of 3,000 gallons or less.
- Solid fertilizers, such as ammonium nitrate, provided they are not mixed with any organic substance.

Restricted CDL

- When not operating a CMV, he/she can only drive the types of vehicles before the restricted CDL was issued.
- A person already holding a CDL or commercial learner's permit is not eligible for a restricted CDL.

321.453 EXCEPTIONS

- The provisions of this chapter governing size, weight, load, and permit requirements do not apply to implements of husbandry moving on the highway...except for the interstate and except as provided in 321.463, 321.471, and 321.474.
- A vehicle, carrying an implement of husbandry, shall be equipped with an amber flashing light visible 360 degrees. The vehicle shall also be equipped with warning flags at the widest point, and only operate from thirty minutes prior to sunrise to thirty minutes following sunset

321.383 EXCEPTIONS FOR SMV

- Prohibits towing more than one implement if owner is a retail seller involving delivery
- Prohibits power units operating faster than 35 mph
- Requires placement of slow moving vehicle signs

HOURS OF OPERATION

321.398 Lamps on other vehicles and equipment.

All vehicles...must be equipped with at least one lighted lamp exhibiting a white light visible from a distance of five hundred feet to the front...and, with a lamp or lantern exhibiting a red light visible from a distance of five hundred feet to the rear. during the time specified in section 321.384 (Sunset to sunrise).

IMPLEMENT OF HUSBANDRY: GRAIN WAGONS



Limitations?

- Hours of operation
- Speed limitations
- Slow moving vehicle signs

IMPLEMENT OF HUSBANDRY: GRAIN CARTS



Must comply with Iowa weight law
-Be aware of planting and harvesting seasons-
Differences in allowed weight

- February 1st to May 31st
- June 1st to January 31st

BRIDGE WEIGHT LIMITS

All Vehicles must comply with posted weight limits on bridge and highway structures!...

A farm tractor or implement is a vehicle too.



FARM PLATES

Special farm registration limitations and use:

- Must not be used to transport for-hire or for compensation.
- Must be used by a person engaged in farming.
- Must transport commodities produced or used on the farm.
- May be used in an exchange of services between farmers.
- Truck tractors may not be operated more than 15,000 miles annually.
- Truck tractors require annual mileage certification.
- May be used for occasional charitable purposes.
- May have a gross weight of 6 to 32 tons plus tolerance.
- Is valid in other International Registration Plan states.
- Other states may honor the plate but only at the licensed weight not including the 25 percent tolerance

BUSINESS TRADE PLATES

To qualify for a business-trade registration, all of the following criteria must apply.

- The truck must be a 2010 model year or newer truck and weigh 10,000 pounds or less empty.
- It must be owned or leased by a corporation, limited liability company or partnership, or a person who files as a farm or business with the Internal Revenue Service.
- If the truck is leased, the truck must be used primarily for the purposes of the lessee's own business or farming operation.
- Business-trade trucks will be assessed a flat vehicle registration fee based on the vehicle's registered weight.

REGISTERED WEIGHT

Registration weight is the tonnage declared on the license plate purchased for a vehicle 2010 model year and older...and is purchased by the ton.

- Registration weight is sometimes referred to as tonnage.
- The power unit registration must have a registration weight equal to or greater than the actual weight of the truck, trailer(s), and cargo.

Tolerance- NOT actual weight and Intrastate only

- 5 percent registration weight tolerance for all vehicles
- 25 percent registration weight tolerance for raw agricultural products

REGISTERED WEIGHT

Iowa ONLY

Registration exception including 5 percent tolerance

- Truck must be properly registered for 6 tons or less.
- Truck and transfer weight must not exceed 12,600 pounds.
- Combined gross weight must not exceed 25,200 pounds.

Registration exception for farmers including 25 percent tolerance

- Truck must be properly registered for 6 tons or less.
- Truck and transfer weight must not exceed 15,000 pounds.
- Combined gross weight must not exceed 30,000 pounds.

AG NURSE TANKS



- Operated intrastate by farmer-Needs valid drivers license
- Operated intrastate by non-farmer-needs CDL and endorsements
- Operated interstate by farmer or non farmer-Needs CDL, HM endorsement, must meet equipment standards

FUEL TRAILERS



- Operated farm to farm, requires valid drivers license, registration and meet equipment standards.
- Operated farm to anywhere else, requires valid CDL and endorsements
- Equipment standards apply- lights, Brakes and breakaway device

TRUCKERS AGAINST TRAFFICKING

Prevention and Intervention: Combating Human Trafficking Through the Trucking Industry



COPYRIGHT TRUCKERS AGAINST TRAFFICKING
271

HUMAN TRAFFICKING IN THE UNITED STATES

- Human trafficking involves the exploitation of people for the purposes of commercial sex or forced labor.
- FBI sting operations (2003-present) have recovered children as young as 13 that were being prostituted at truck stops as well as adults who'd been prostituted.

272
COPYRIGHT TRUCKERS AGAINST TRAFFICKING

TAT'S MISSION:

- Truckers against Trafficking seeks to **educate, equip, empower** and **mobilize** members of the trucking industry to combat human trafficking as part of their regular jobs.

*Website	*Truck Shows
*Materials	*Radio and Print
*Webinar	*Social Media
*Training DVD	*Partnerships



COPYRIGHT TRUCKERS AGAINST TRAFFICKING
273

TAT'S GOALS

- Partner with law enforcement to and industry to facilitate the investigation of human trafficking.
 - Calls and Tips
 - Scouting/Intel
 - Building Coalitions
 - Iowa DOT Model



COPYRIGHT TRUCKERS AGAINST TRAFFICKING
274

MVE'S GOAL

- Put a wallet card into the hands of every driver/GM in America, so that when they see a *minor working the lot or suspect pimp control*, they'll call:
1-888-3737-888
and report what they know.

COPYRIGHT TRUCKERS AGAINST TRAFFICKING
275

National Hotline: 1-888-3737-888 (Multi-Lingual)
1-800-222-TIPS (Canada)
Text INFO or HELP to BeFree (233733)
Report by Email: nhtrc@PolarisProject.org

Warning: Please do not approach traffickers. Call the hotline, and if instructed, the local police (911). Allow law enforcement to deal with traffickers and rescue victims. Approaching traffickers is not only dangerous for you and their victims but could lead to problems in the eventual prosecution of traffickers. Also, if at a truck stop/travel plaza, please notify the manager-on-duty of the suspicious activity; she/he needs to be aware of what is taking place on the lot and assist in ending it.

If you have seen the TAT Training DVD and reviewed this wallet card, please register as TAT Trained at <http://tat8.nodejitsu.com>.
If you have seen the TAT Training DVD and reviewed this wallet card, please register as TAT Trained at <http://tat8.nodejitsu.com>.

If you have seen the TAT Training DVD and reviewed this wallet card, please register as TAT Trained at <http://tat8.nodejitsu.com>.



1/15

Make the Call, Save Lives.



1-888-3737-888 (US)
1-888-3737-888 (US)
1-800-222-TIPS (Canada)
Text INFO or HELP to BeFree (233733)
www.truckersagainstrafficking.org

COPYRIGHT TRUCKERS AGAINST TRAFFICKING

276

Human trafficking is modern-day slavery. Traffickers use force, fraud and coercion to control their victims. Any minor engaged in commercial sex is a victim of human trafficking. Trafficking can occur in many locations, including truck stops, restaurants, rest areas, brothels, strip clubs, private homes, etc. Truckers are the eyes and the ears of our nation's highways. If you see a minor working any of these areas or suspect that the person selling sex is under someone else's control in order to make a quota, call the National Hotline and report your tip: **1-888-3737-888 (US) • 1-800-222-TIPS (Canada)**

Text INFO or HELP to BeFree (233733)

For law enforcement to open an investigation on your tip, they need "actionable information." Specific tips helpful when reporting to the hotline would include:

- Descriptions of cars (make, model, color, license plate number, etc.) and people (height, weight, hair color, eye color, age, etc.)
- Take a picture if you can.
- Specific times and dates (When did you see the event in question take place? What day was it?)
- Addresses and locations where suspicious activity took place

For law enforcement to open an investigation on your tip, they need "actionable information." Specific tips helpful when reporting to the hotline would include:

- Descriptions of cars (make, model, color, license plate number, etc.) and people (height, weight, hair color, eye color, age, etc.)
- Take a picture if you can.
- Specific times and dates (When did you see the event in question take place? What day was it?)
- Addresses and locations where suspicious activity took place

Make the Call, Save Lives.

Questions to Ask:

Do you keep your own money? If not, who does?
Do your parents/siblings/relatives know where you are? If not, why not?
When was the last time you saw your family?
Are you physically or sexually abused? Are you or your family threatened? What is the nature of the threats?

Trafficking Red Flags to Look For:

- Lack of knowledge of their community or whereabouts
- Restricted or controlled communication-not allowed to speak for self
- CB chatter about "commercial company" or flashing lights signaling "buyer" location
- Lack of knowledge of their community or whereabouts
- Restricted or controlled communication-not allowed to speak for self
- CB chatter about "commercial company" or flashing lights signaling "buyer" location
- Not in control of own identification documents (ID/passport)
- Any acknowledgement that she/he has a pimp and is making a quota
- Signs of branding or tattooing of trafficker's name (often on the neck)

COPYRIGHT TRUCKERS AGAINST TRAFFICKING

277

MAKING AN IMPACT



COPYRIGHT TRUCKERS
AGAINST TRAFFICKING

CALL TO ACTION

- Train your drivers.
- Register them as TAT Trained.
- Make the call.
- Spread the word.

1-888-3737-888



COPYRIGHT TRUCKERS AGAINST TRAFFICKING

279

CONTACT US

- Truckers Against Trafficking
tat.truckers@gmail.com or 720-202-1037
Kendis Paris, TAT National Director
- National Human Trafficking Resource Center (NHTRC)

1-888-3737-888

truckersagainsttrafficking.org



COPYRIGHT TRUCKERS AGAINST TRAFFICKING
280

TRAFFIC STOPS, WHY ME?

What generates a traffic stop ?

1. Any known/observed violation....Probable Cause Stops.
*Speed, Seatbelts, tinted windows
2. Officer Experience....violations that is based off of an officers work experience
*Overweight vehicles, observed vehicle condition, strange location/direction of travel
3. Vehicle inspections....Could be a random selection due to the officers assignment



WHAT TO DO AT A TRAFFIC STOP:	
POLICE OFFICER RECOMMENDATIONS:	DRIVER RECOMMENDATIONS:
 <ol style="list-style-type: none"> 1 Select a good location for the stop. 2 Introduce yourself and explain why you stopped the driver. 3 Be courteous. 4 Stand to the rear of the driver's window. 5 Be alert - every traffic stop is different. 	 <ol style="list-style-type: none"> 1 Pull over to the right side of the road. 2 Pull over near a light source. 3 Do not get out of the car. 4 Do not reach under the seat or glove compartment. 5 Keep hands on steering wheel.

Source: Miami Police Officer Ryan Ladd
Copyright © 2010 Truckers Against Trafficking

TRAFFIC STOPS

What we need, to do our job,
so you can get back to yours!

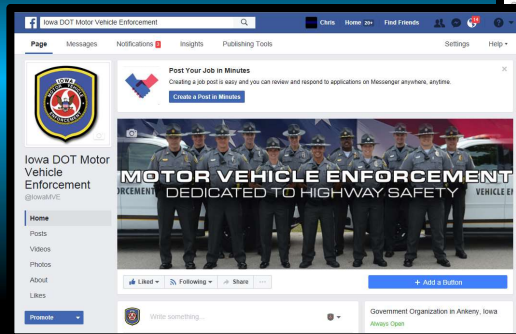
Here are the big 5:

1. CDL/Med Card
2. Registration Tractor & Trailer
3. Insurance Card
4. Log book/HOS
5. Annual Inspections



QUESTIONS??

Motor Vehicle Enforcement Online Facebook & Twitter



PUBLIC INFORMATION



1-515-237-3305
Online:
www.mymvd.iowadot.gov

Iowa Farm Bureau's Margin Management Webinar Series:

2018 Transportation Rules for Farmers

Thanks for your participation!

Please fill out a brief evaluation by clicking:

<https://tinyurl.com/DOTweb18>

*Recordings of this webinar and materials will be available for Farm
Bureau members at www.iowafarmbureau.com*

Speaker:

Officer Robert B. Wittkowski T418

Iowa Department of Transportation

Motor Vehicle Enforcement